

2013 LEXION Owner's clinic

700 series






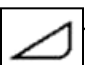



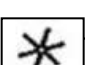


CEBIS guide

Combine and header set-up guide



Location

Description

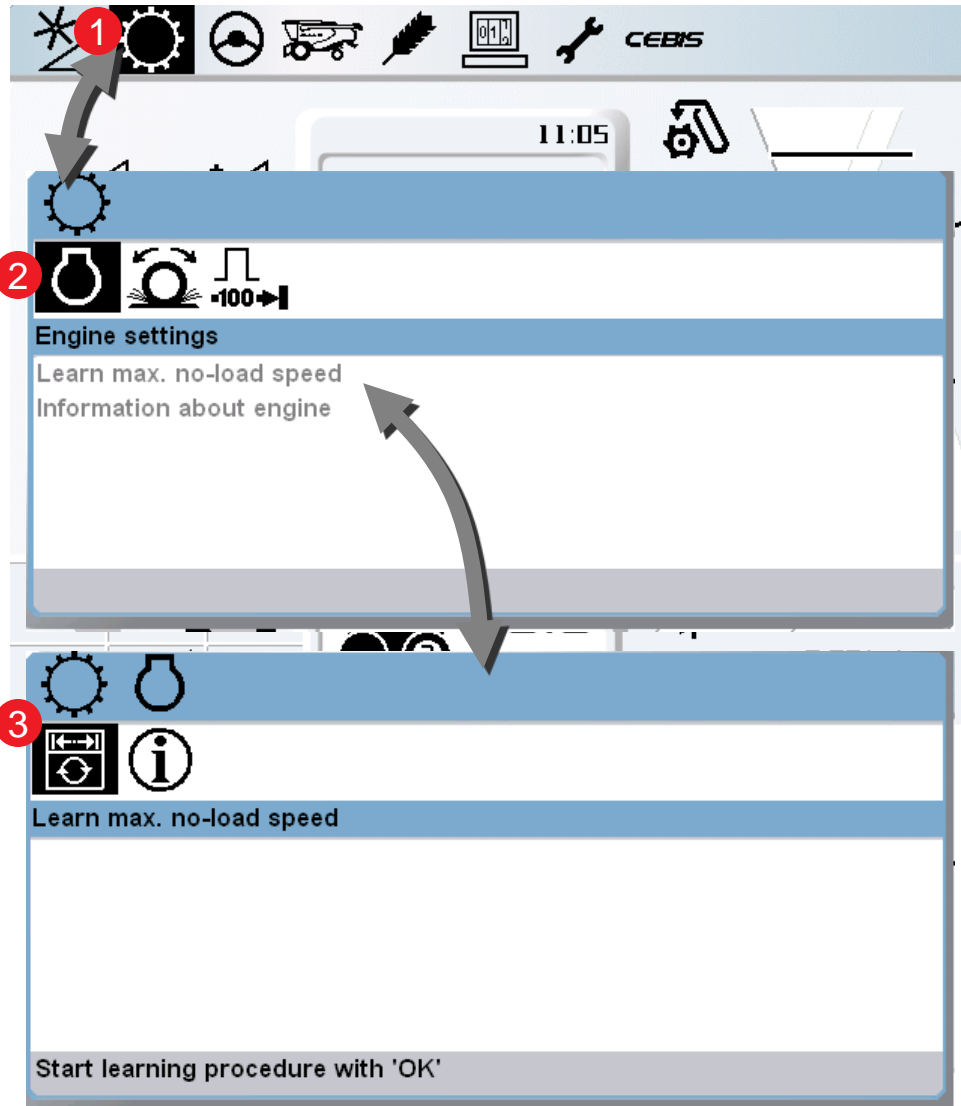
-  1. **Learn speeds:** (1) Max no-load, (2) Learn
-  2. **Learn sieve end stops**
-  3. **Load crop settings**
-  4. **Enter working (header) width**
-  5. **Learn cutting height limits** (each time head is changed)
-  6. **Set individual pre-set cutting heights**
-  7. **Learn working position** (activates automatic functions)
-  8. **Set CAC sensitivity**
-  9. **Auto-header ON/OFF** (auto-reel speed)
-  10. **Set auto-reel speeds**
-  11. **Set clock**
-  12. **LEXION engine hours and separator hours**

1 Learn Speeds » (1) Max no-load Speed (2) Learn

Learning max. no-load engine speed:

Navigation Tips

1. Scroll to the gear icon and select it.
2. Scroll to engine settings icon and select it.
3. Scroll to Learn Max. no-load speed
4. When highlighted, start learning procedure with “ok” (pushing on Selector).

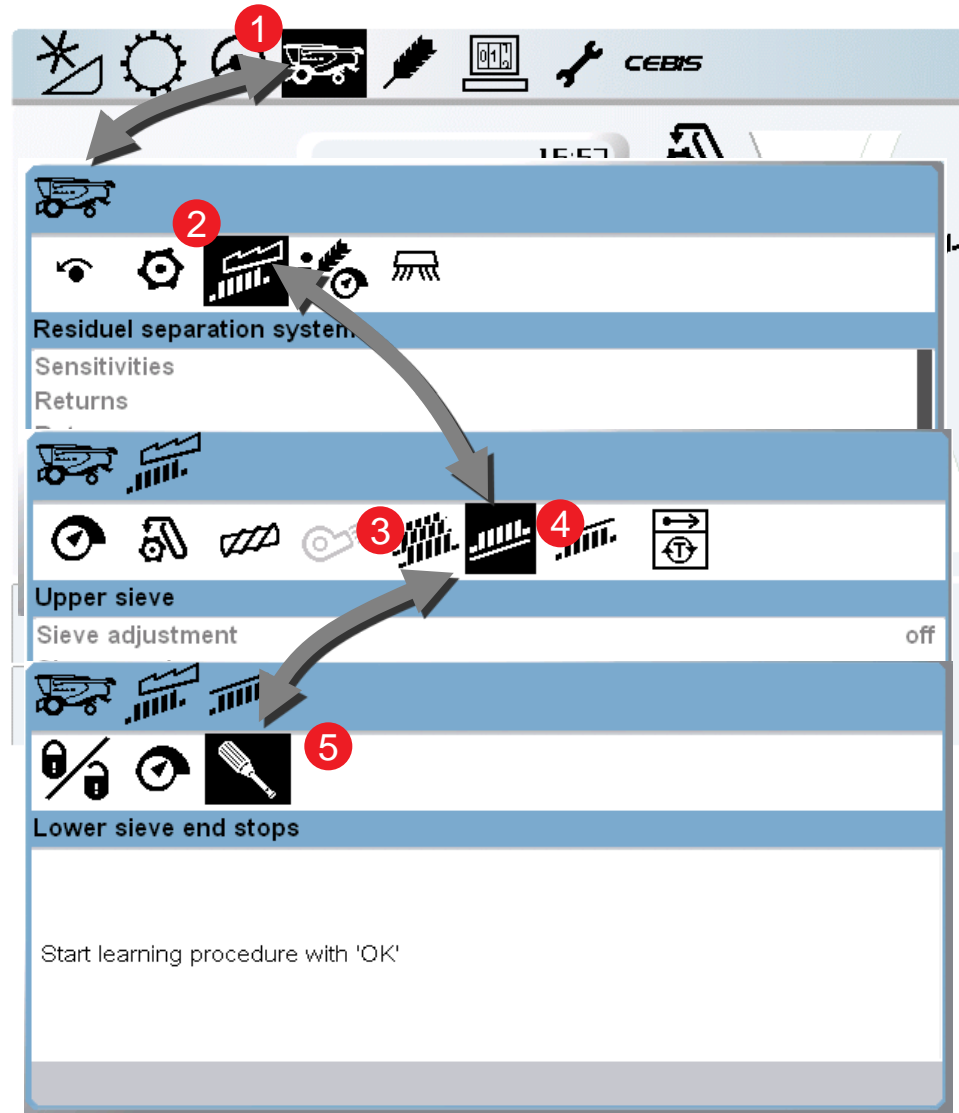


2 Learn sieve end stops » (upper and lower)

Learning sieve end stops:

Navigation Tips

1. Scroll to the combine icon and select it.
2. Scroll to Residual separation system icon and select it.
3. It is necessary to select the correct sieves in the machine before the learning process begins
4. Scroll to Upper sieve and then after Lower sieve
5. When highlighted, start learning procedure with "ok" (pushing on Selector).
6. Repeat this step also for the Lower sieve

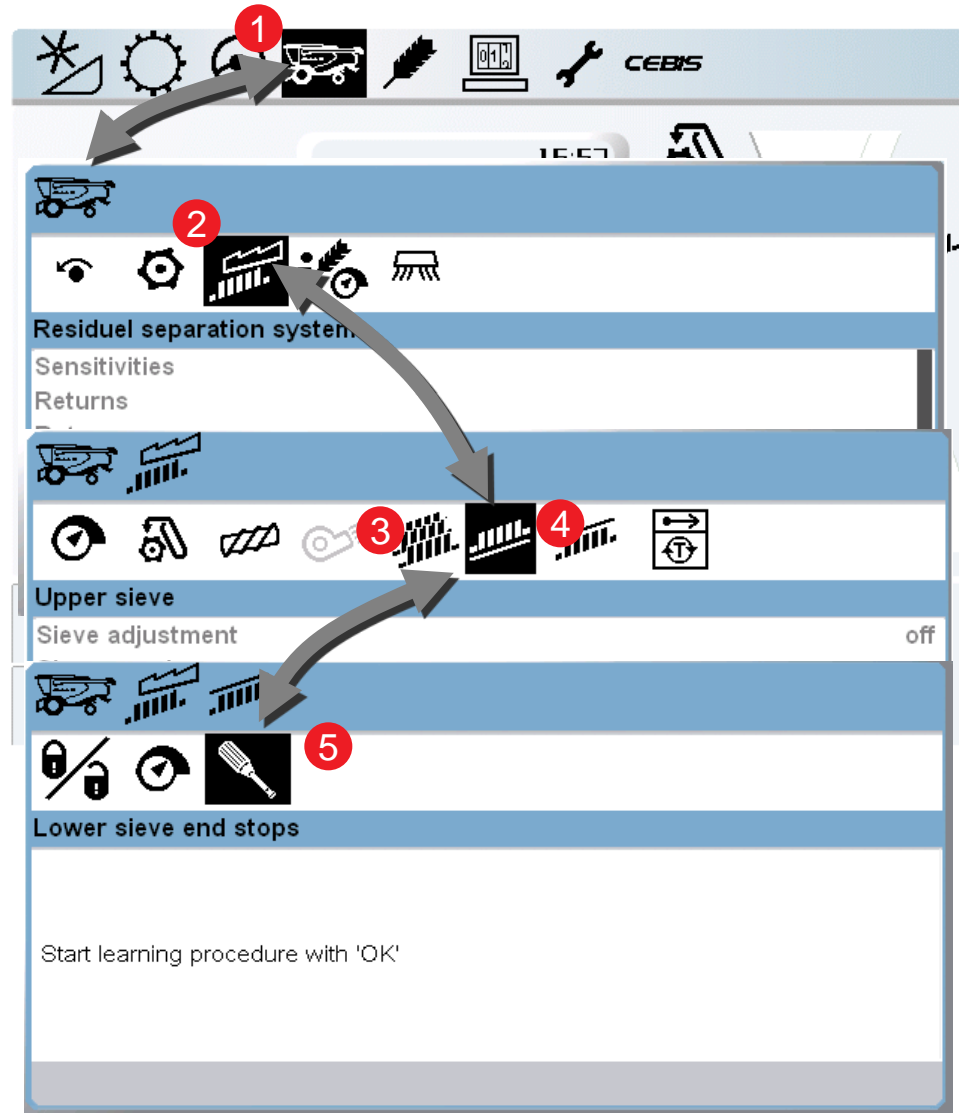


2 Learn sieve end stops » (upper and lower)

Learning sieve end stops:

Navigation Tips

1. Scroll to the combine icon and select it.
2. Scroll to Residual separation system icon and select it.
3. It is necessary to select the correct sieves in the machine before the learning process begins
4. Scroll to Upper sieve and then after Lower sieve
5. When highlighted, start learning procedure with "ok" (pushing on Selector).
6. Repeat this step also for the Lower sieve

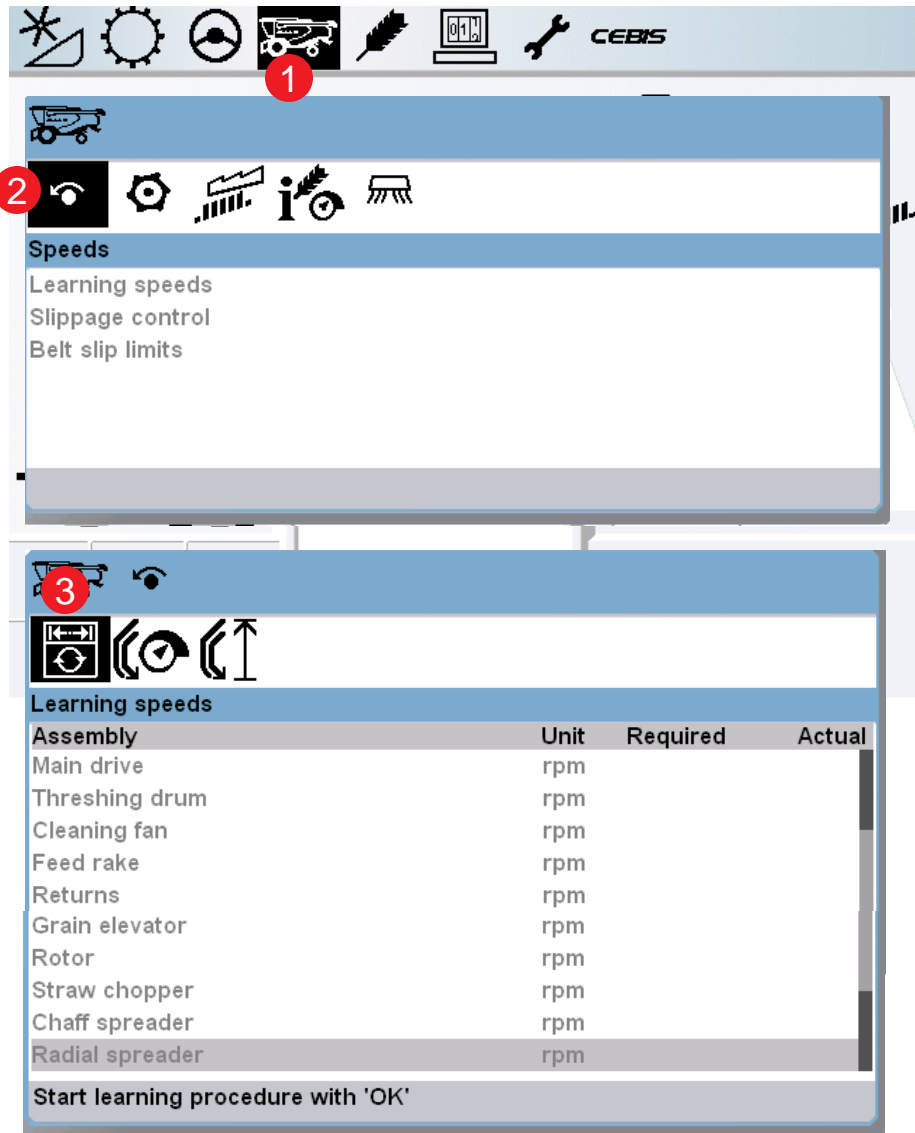


3 Learning speeds » Max no-load Speed learning

Learning Speeds:

Navigation Tips

1. Scroll to the combine icon and select it.
2. Scroll to the speeds icon and select it.
3. Scroll to the learning speeds icon and select it.
4. Scroll through the drives and select for starting the learning procedure.



3 Load Settings »

Loading machine settings:

Navigation Tips:

1. Scroll to the Crop settings icon and select it.
2. Scroll to the Crop data icon and select it
3. Scroll to the Machine data icon and select it.
4. Scroll to Corn and select it.
5. When selected the preset speeds will be displayed in the window shown.
6. The set the preset speeds to reset the machines values press O.K. and the machine will automatically adjust for the crop.
7. The type of crop will also be changed which will directly change the settings for the Quantimeter.

The screenshot shows the CLAAS LEXION control panel interface. At the top, there is a toolbar with icons for various functions, including a gear, a wheel, a combine harvester, a crop icon, a laptop, and a wrench. The main menu is divided into sections: 'Crop data', 'Machine data', and 'Loading data'. The 'Crop data' section includes options like 'Own data', 'Storing data', 'Delete data', 'Redefine data', and 'Assign favourite'. The 'Machine data' section lists crop types: Dwarf beans, Peas, Soybeans, Sun flowers, Corn, and Corn Cob Mix. The 'Loading data' section is a table with columns for Assembly, Unit, Required, and Actual. The table shows the following data:

Assembly	Unit	Required	Actual
Feed rake	rpm	420	420
Concave position	mm	26	26
Sensitivity sieves	%	40	40
Sensitivity residual separation system	%	40	40
Type of crop		Corn	Corn

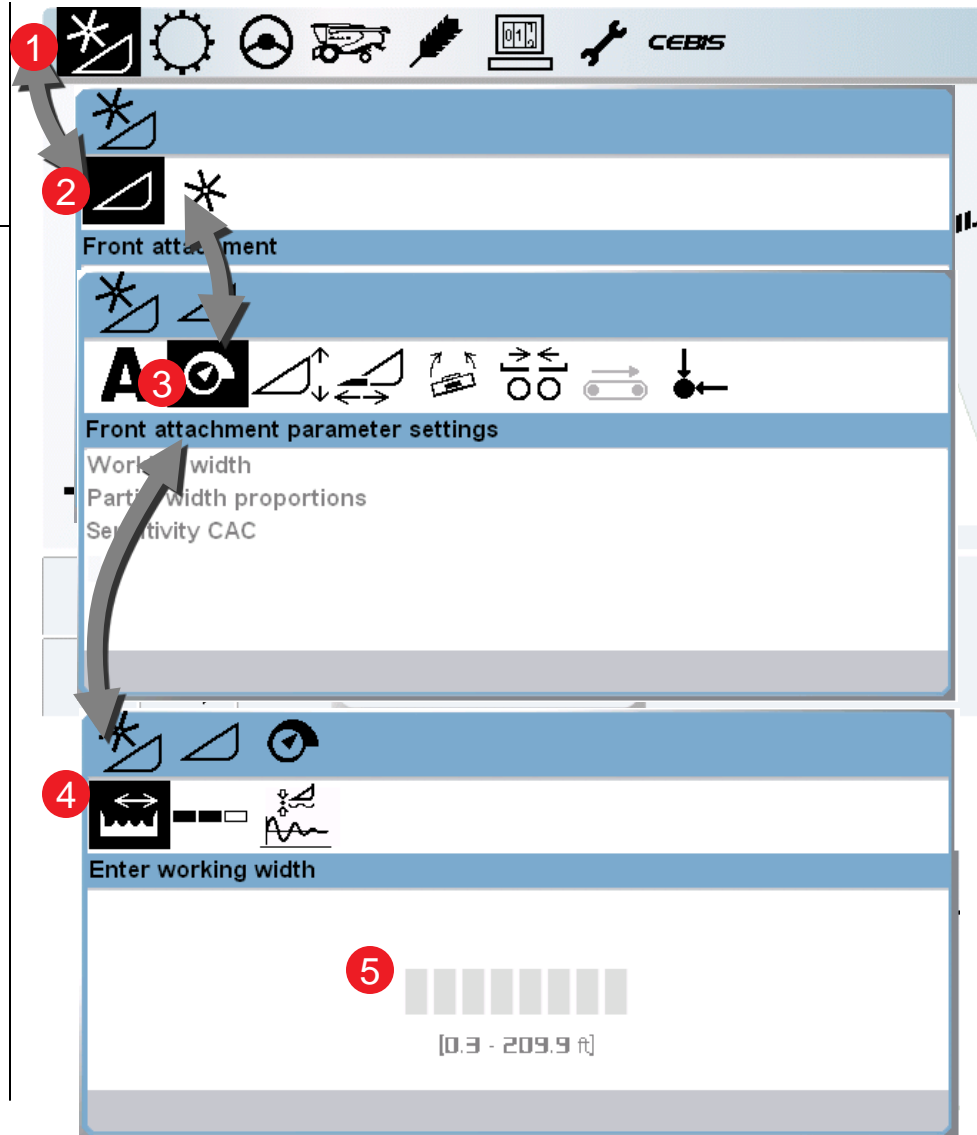
Red numbered callouts (1-7) indicate the sequence of actions to be taken: 1. Select the crop icon; 2. Select the Crop data icon; 3. Select the Machine data icon; 4. Select the Corn option; 5. The Loading data table is displayed; 6. Start adjusting for crop with 'OK'; 7. The Type of crop is set to Corn.

4 Learn working width »

Setting the header working width:

Navigation Tips

1. Scroll to the header icon and select it.
2. Scroll to the front attachment icon and select it.
3. Scroll to the Front attachment parameter settings icon and select it.
4. Scroll to the Enter working width icon and select it.
5. Scroll to increase / decrease header width and select (ok) to accept value.

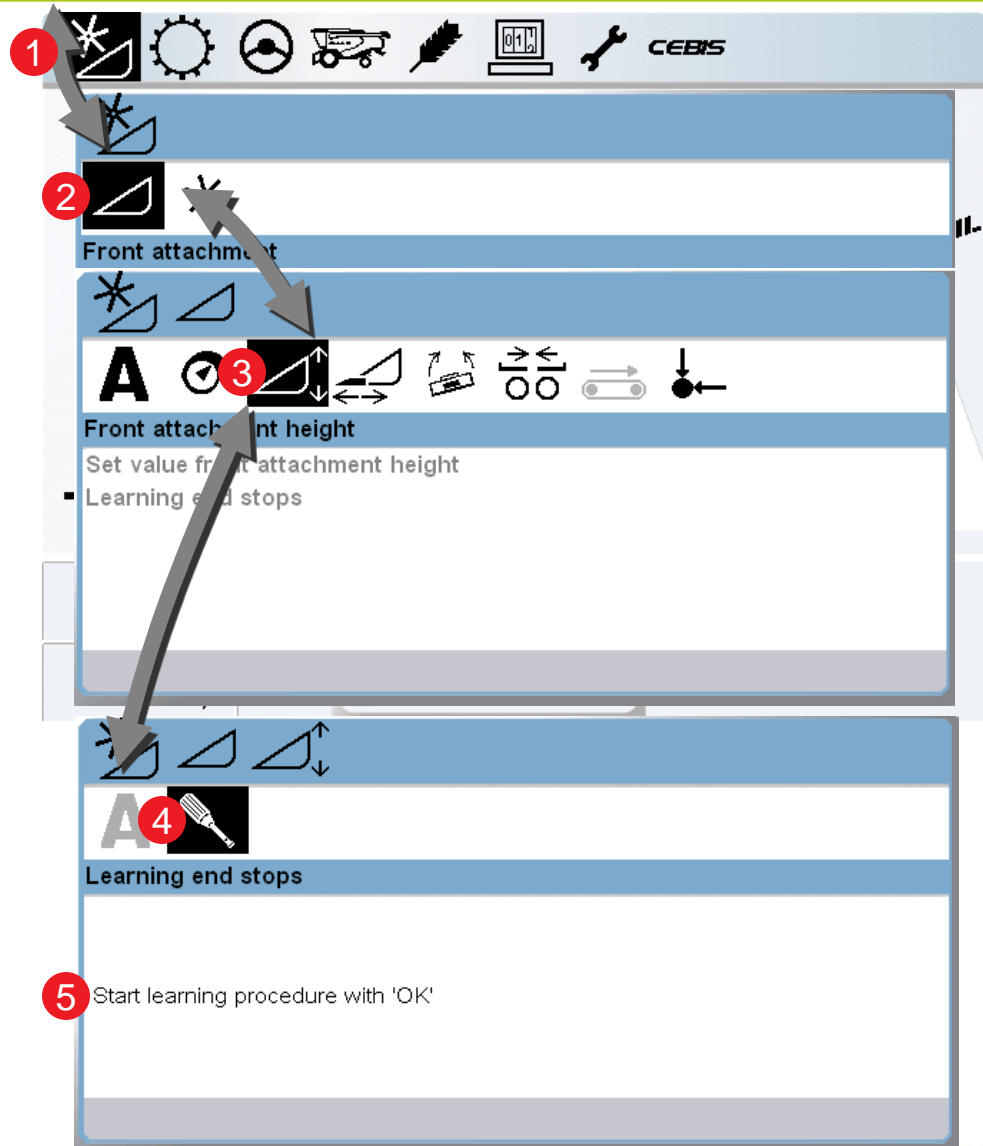


5 Learn cutting height limits »

Learning header end stops (cutting height limits):

Navigation Tips:

1. Scroll to the header icon and select it.
2. Scroll to the Front attachment icon and select it.
3. Scroll to the Front attachment height icon and select it.
4. Scroll to the Learning end stops icon and select it.
5. Follow the on-screen instructions to learn the working limits of the header.

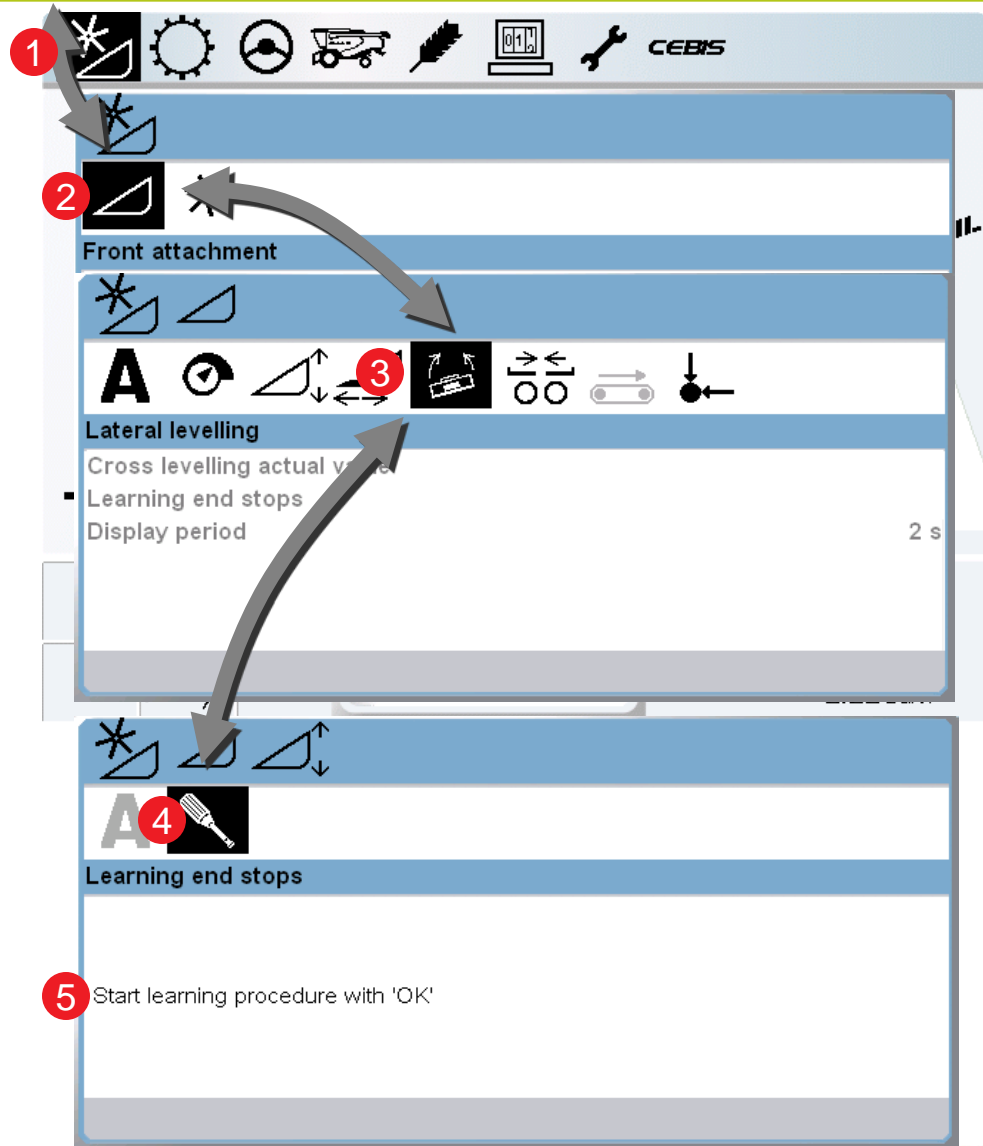


5.1 Learn header limits (lateral leveling)»

Learning header end stops (cutting height limits):

Navigation Tips:

1. Scroll to the header icon and select it.
2. Scroll to the Front attachment icon and select it.
3. Scroll to the Front attachment height icon and select it.
4. Scroll to the Lateral leveling icon and select it.
5. Follow the on-screen instructions to learn the working limits of the header.

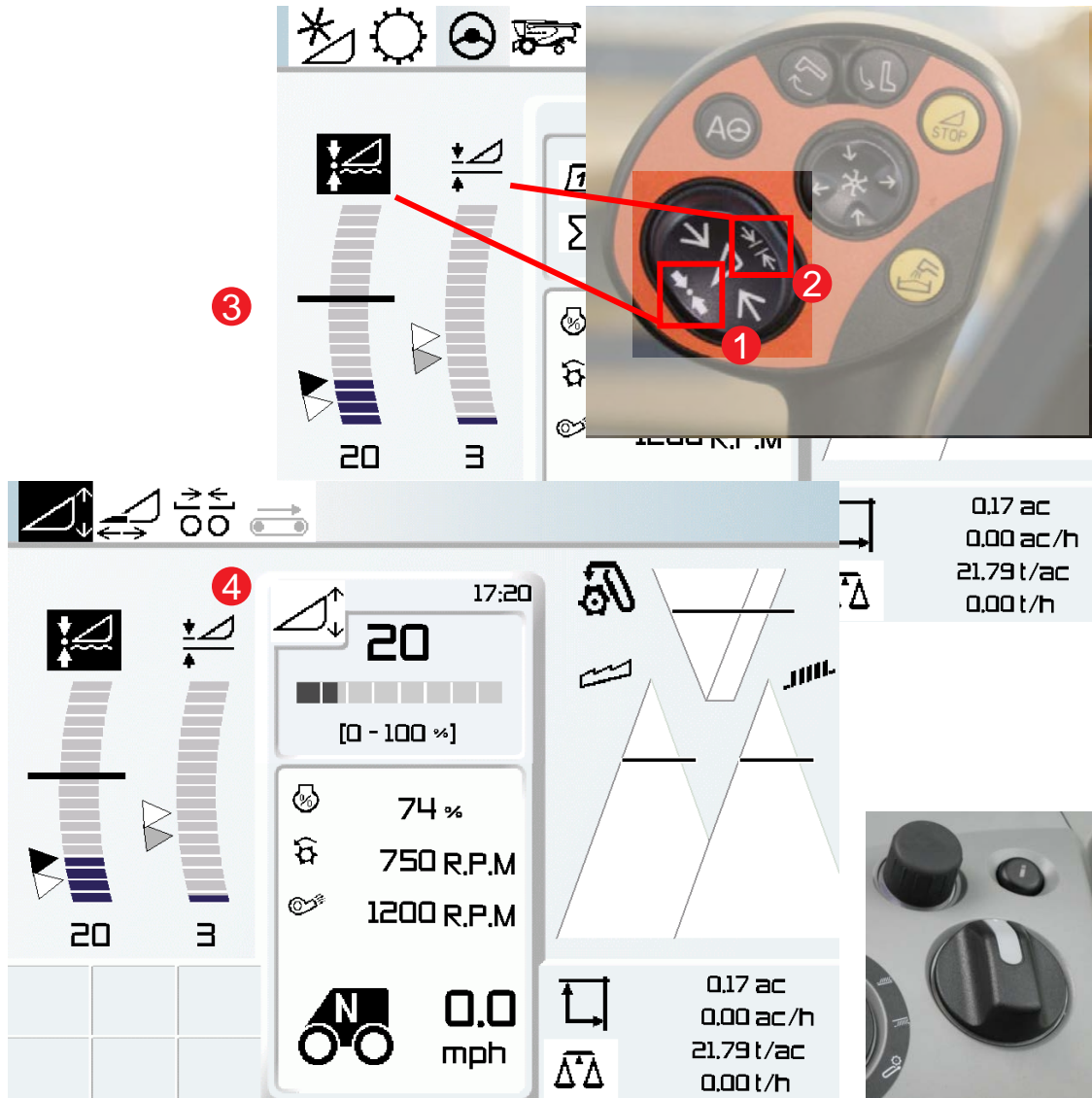


6 Learn individual cutting heights »

Learning cutting heights:

Navigation Tips

1. Use the up and down buttons to position the header at the correct working position and press and hold button 1 and it will save the cutting height, indicated at position 3
- 2.
3. Tap the side of the raise / lower button to select the position you want to adjust
4. Using the + / - buttons adjust the selected cutting height position up or down using the bar graph as reference

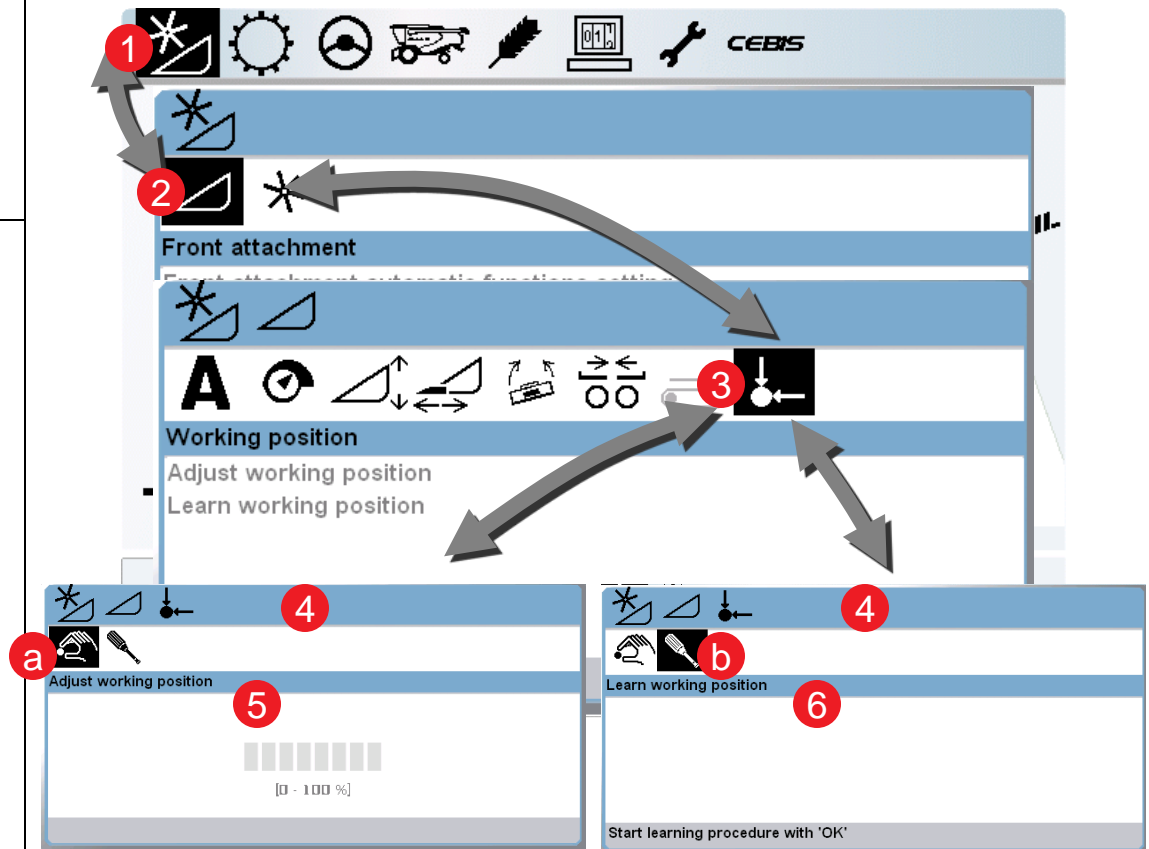


7 Learn working position »

Setting the header working position:

Navigation Tips:

1. Scroll to the header icon and select it.
2. Scroll to the front attachment icon and select it.
3. Scroll to the working position icon and select it.
4. The working position can be defined using 2 methods:
 - a) Adjust working position
 - b) Learn working position
5. Select Adjust working position (a) to manually raise / lower position.
6. Or, select Learn working position (b) for setting working position where the header is currently located.



8 CAC sensitivity »

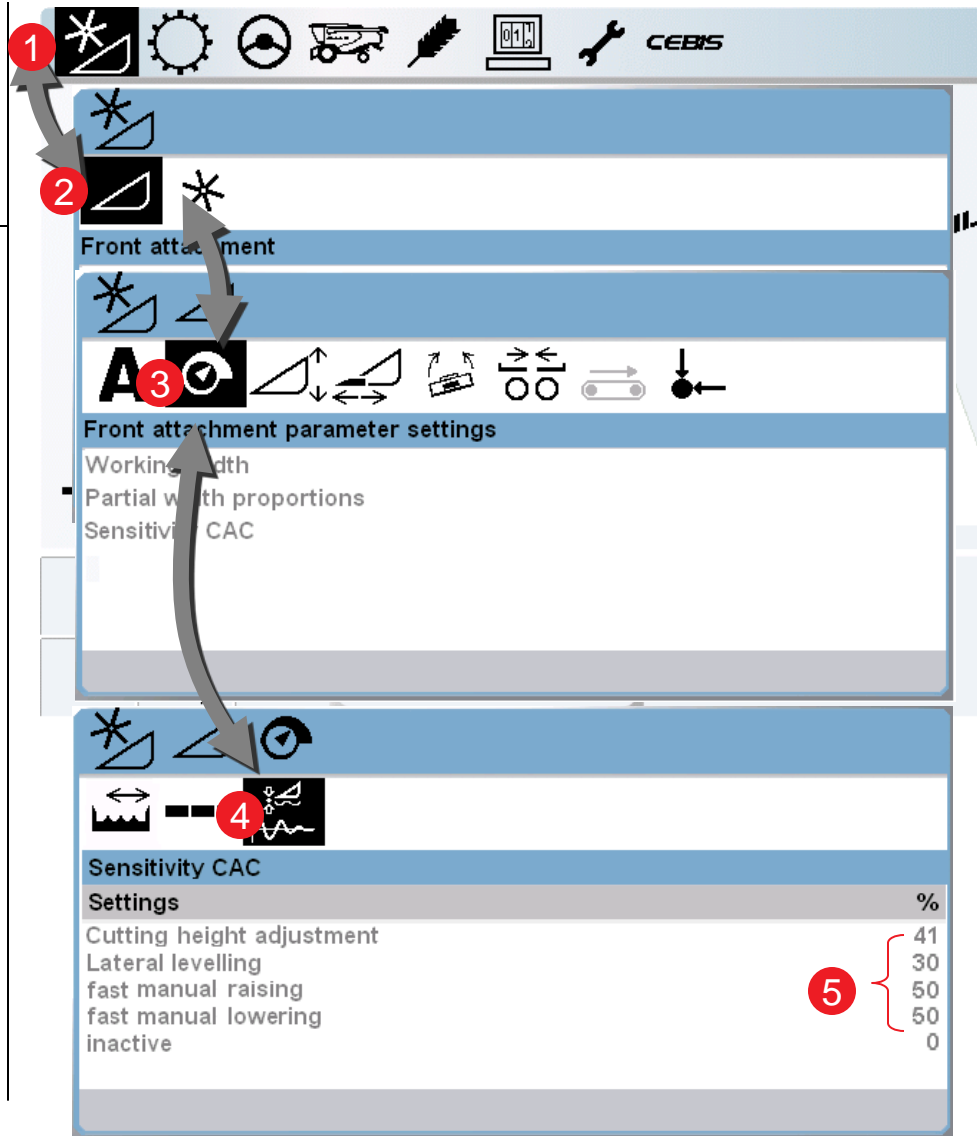
Adjusting the Sensitivity CAC:

Navigation Tips:

1. Scroll to the header icon and select it.
2. Scroll to the front attachment icon and select it.
3. Scroll to Front attachment parameter settings and select it.
4. Scroll to the Sensitivity CAC icon and select it.
5. Scroll between Cutting height adjustment, Lateral leveling, fast manual raising and fast manual lowering.

NOTE:

Cutting height adjustment and Lateral Leveling values should be set as high as possible while maintaining header stability during CAC control.



9 Auto header ON/OFF (VARIO) »

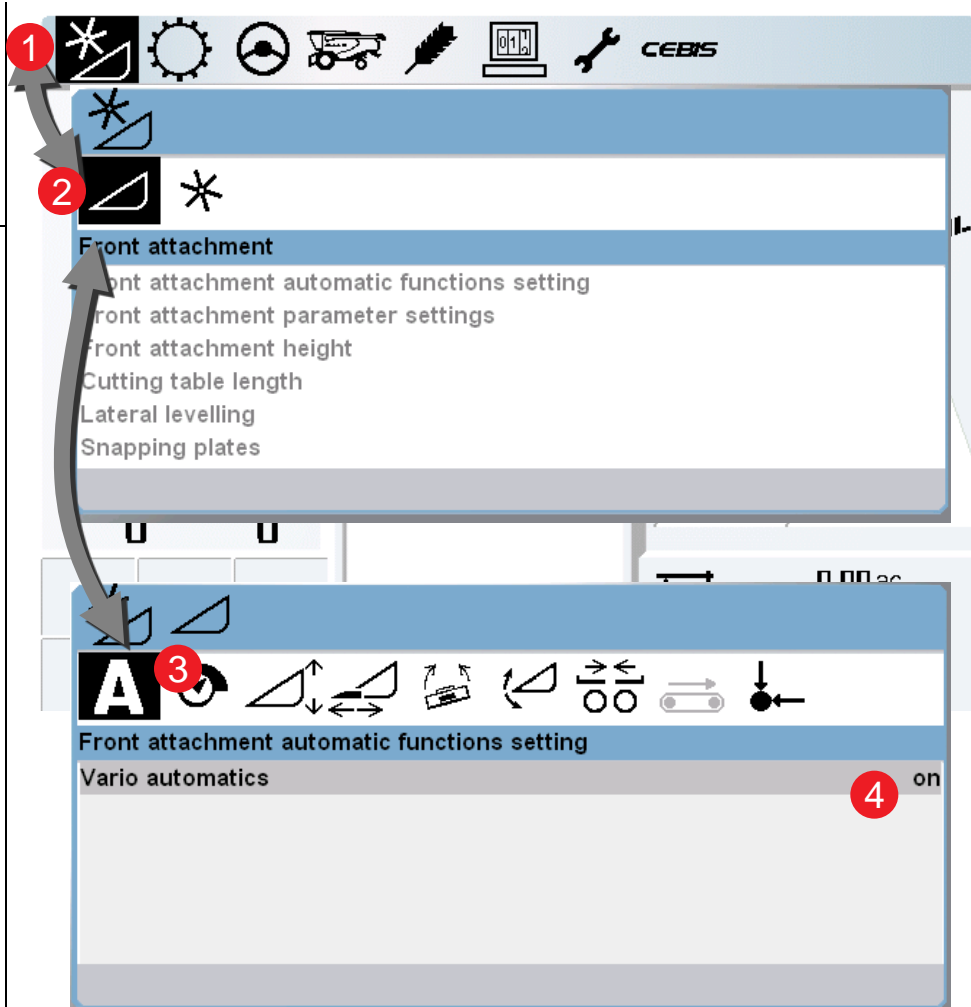
Turning on auto header:

Navigation Tips:

1. Scroll to the header icon and select it.
2. Scroll to the front attachment icon and select it.
3. Scroll to Front attachment automatic functions setting and select it.
4. Scroll to VARIO automatics and turn it on and select it.

Note:

This is needed with headers with automatic functions i.e. VARIO header when the header heights are saved the VARIO table position.



9.1 Auto header ON/OFF (auto reel height and horizontal) »

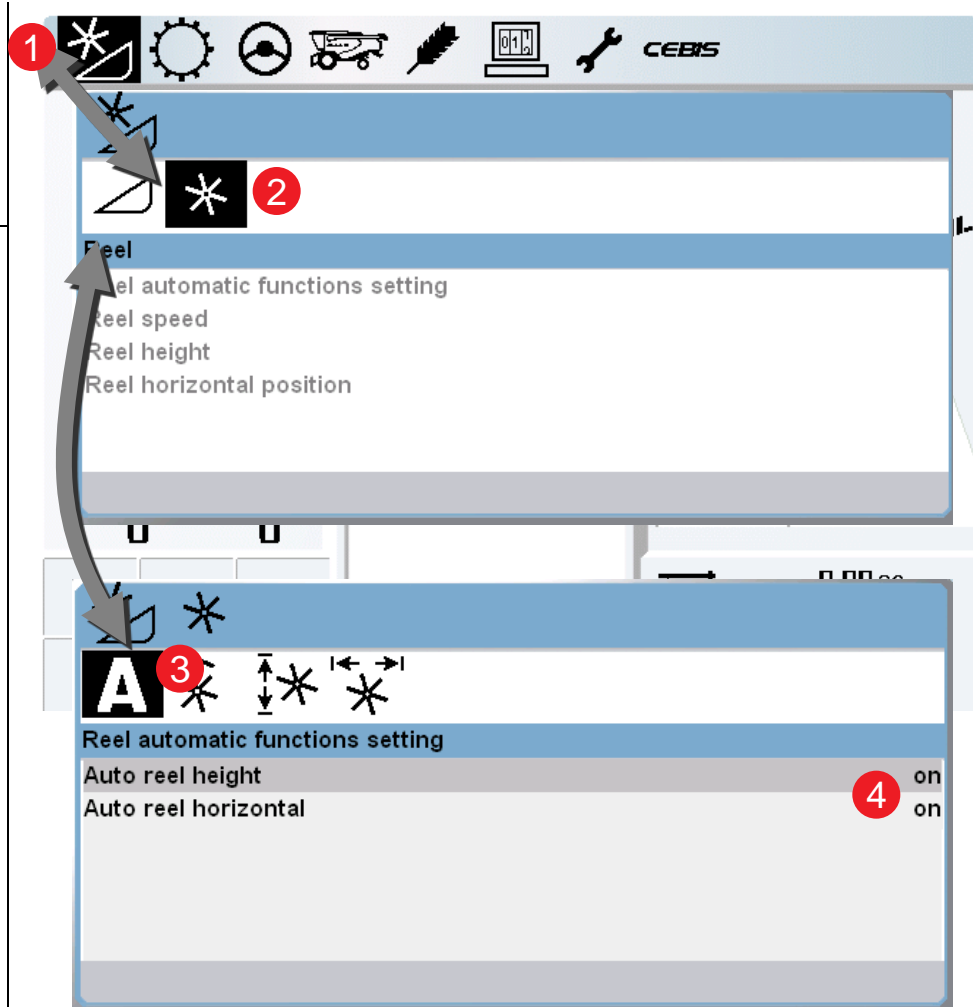
Turning on auto header:

Navigation Tips:

1. Scroll to the header icon and select it.
2. Scroll to the reel icon and select it.
3. Scroll to Auto reel speed and select it.
4. Scroll to Auto reel height and Auto reel horizontal and set both to on.

Note:

Reel automatic function allows auto reel positioning in conjunction with the cutting heights of the cutterbar.



10 Auto Reel speed »

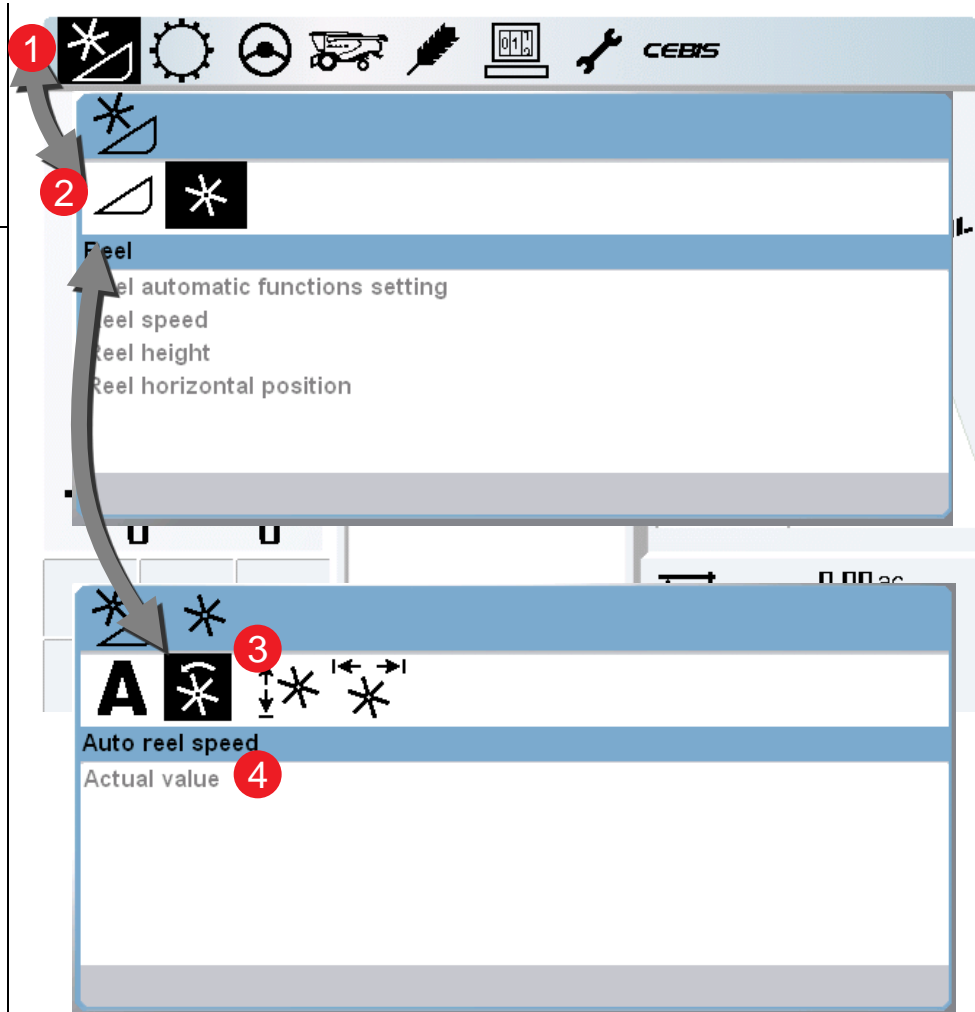
Turning on auto header:

Navigation Tips:

1. Scroll to the header icon and select it.
2. Scroll to the reel icon and select it.
3. Scroll to Auto reel speed and select it.
4. Scroll to Actual value and set the desired value of the auto reel speed.

Note:

Auto reel speed is the auto speed adjustment of the reel in reference to the forward speed of the combine.

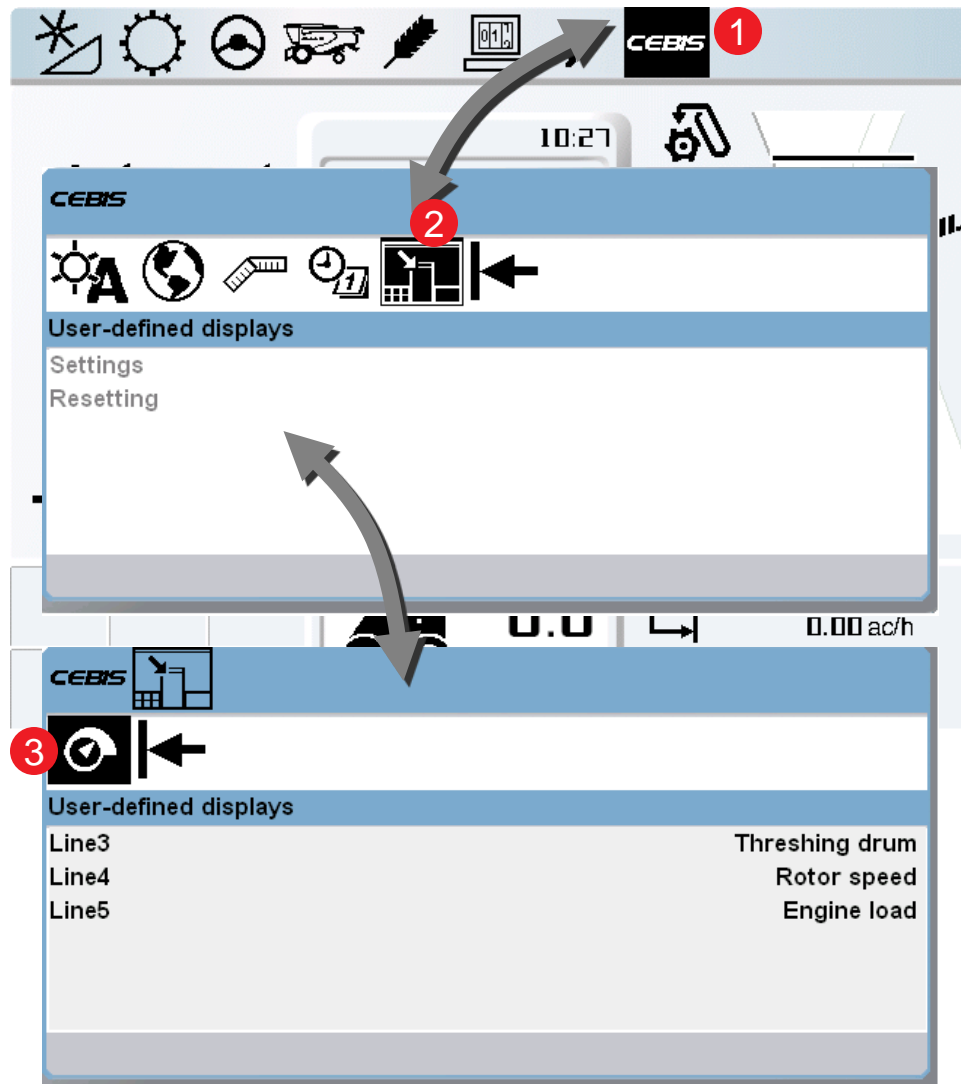


11 Set User defined displays »

Setting CEBIS User-defined displays:

Navigation Tips

1. Scroll to the CEBIS icon and select it.
2. Scroll to the User-defined displays icon and select it.
3. Scroll to User-defined displays and select it.
4. Scroll between Line3, Line4, Line5 and individually choose between the 37 available options.

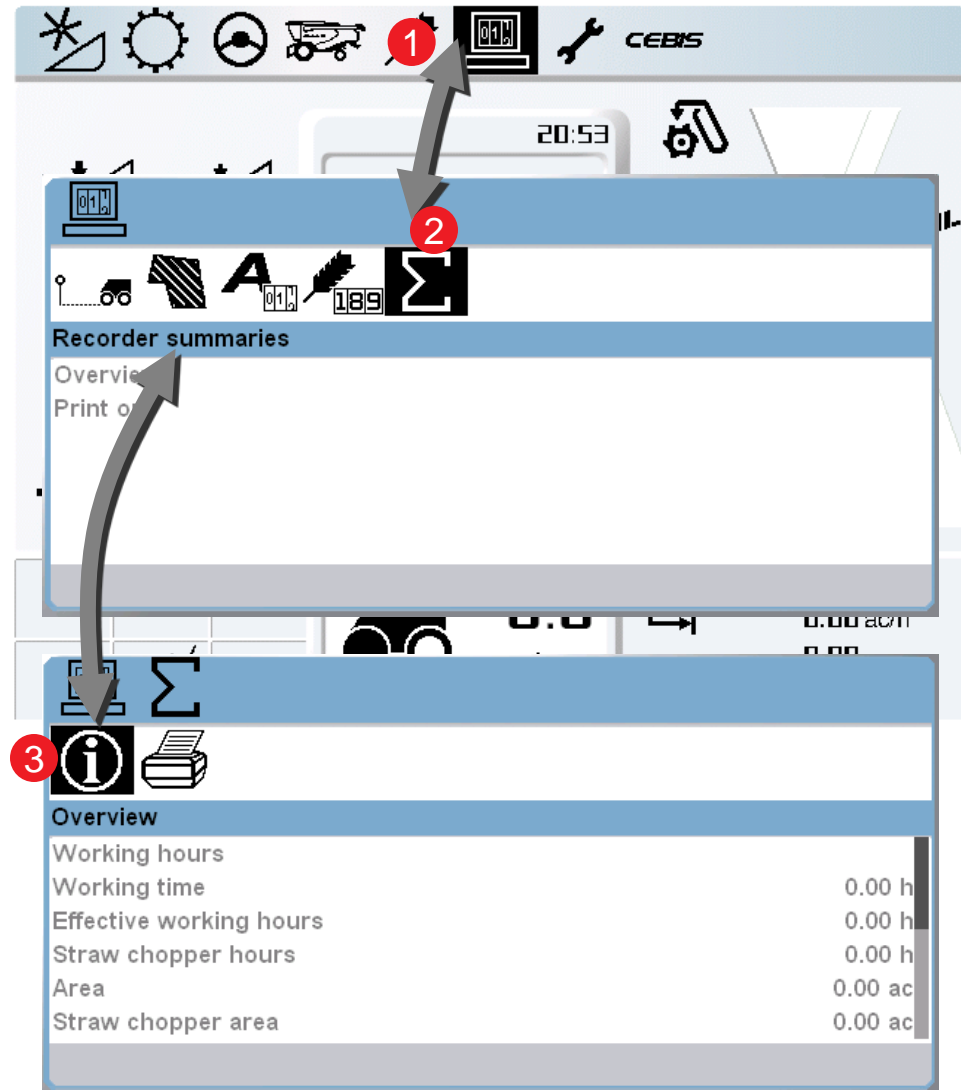


12 LEXION engine hours and separator hours »

Setting CEBIS User-defined displays:

Navigation Tips

1. Scroll to the Computer icon and select it.
2. Scroll to the Recorder summaries icon and select it.
3. Scroll to Overview and select it.
4. Here it is possible to see the engine and separator hours of the machine.

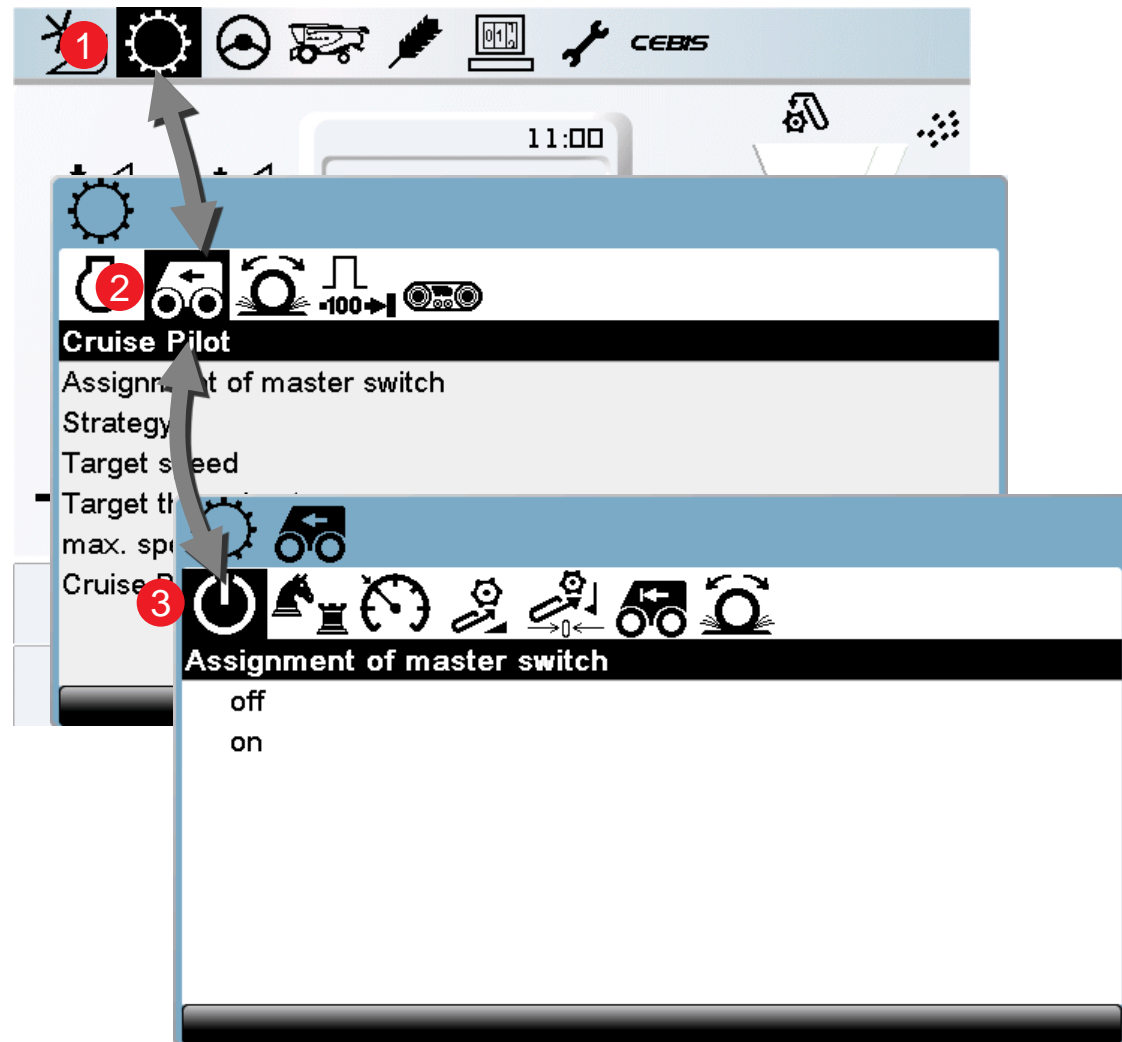


1.1 CLAAS CRUISE PILOT » start

Setup on CRUISE PILOT:

Navigation Tips

1. Scroll to the Gear Icon and select it.
 2. Scroll to the Cruise Pilot icon and select it
 3. Scroll to Assignment of master switch and select it.
 4. Set this menu to ON to turn on Cruise Pilot
- When operating the Cruise Pilot the combine will go to a set speed while unloading on the go.
 - The Cruise Pilot can be turned off by simply touching the brake pedal to take over speed control on the joystick again

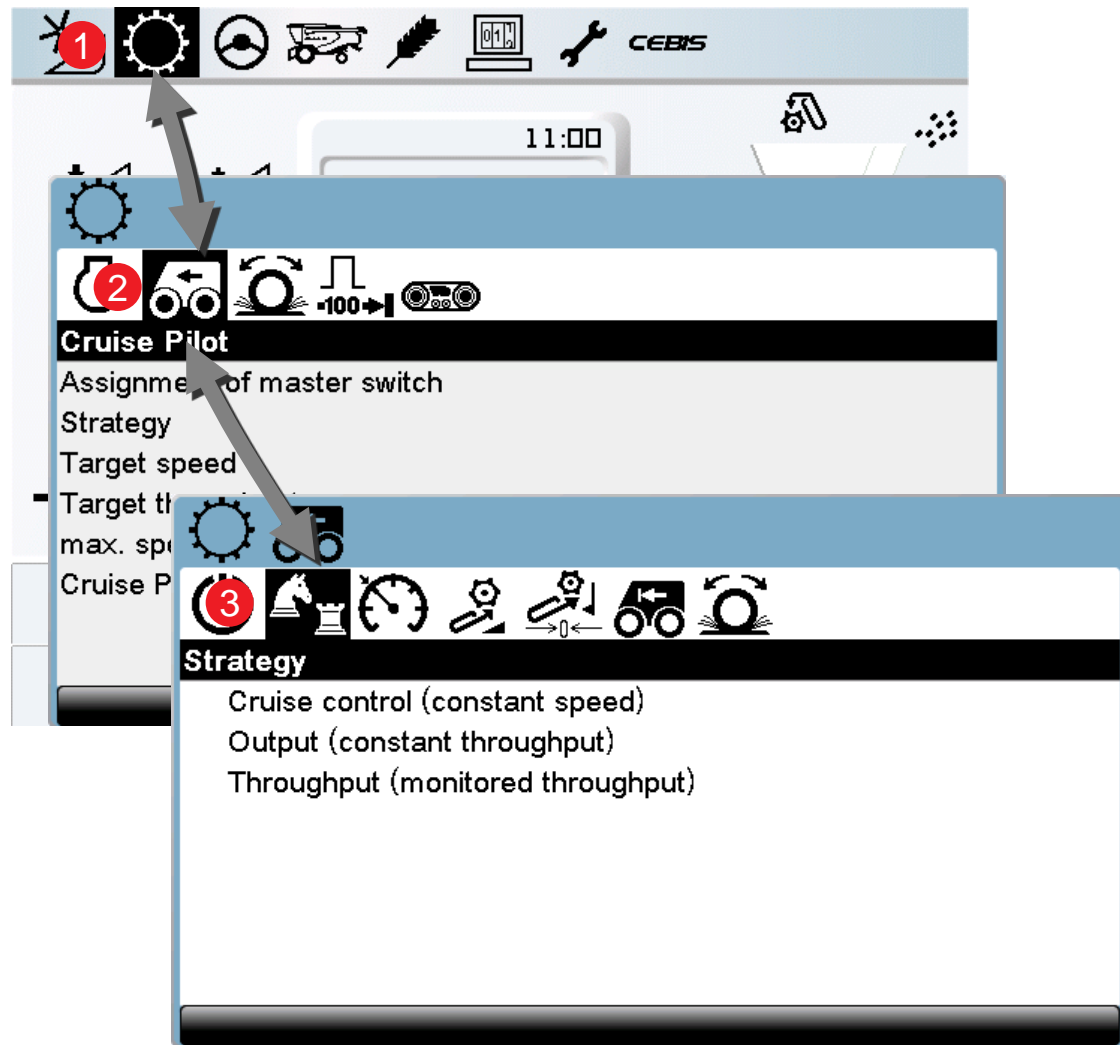


1.2 CLAAS CRUISE PILOT » strategy selection

Setup on CRUISE PILOT:

Navigation Tips

1. Scroll to the Gear Icon and select it.
 2. Scroll to the Cruise Pilot icon and select it
 3. Scroll to Strategy and select it.
 4. Select the desired driving strategy
- Cruise control (constant speed) – works to keep the combine at a constant speed with no reference to any other components
 - Output (constant throughput) – meets set engine load regardless of loss, uses feeder house sensor and also speed as reference
 - Throughput (monitored throughput) – uses all sensors for speed and engine load control automatically with reference to grain loss

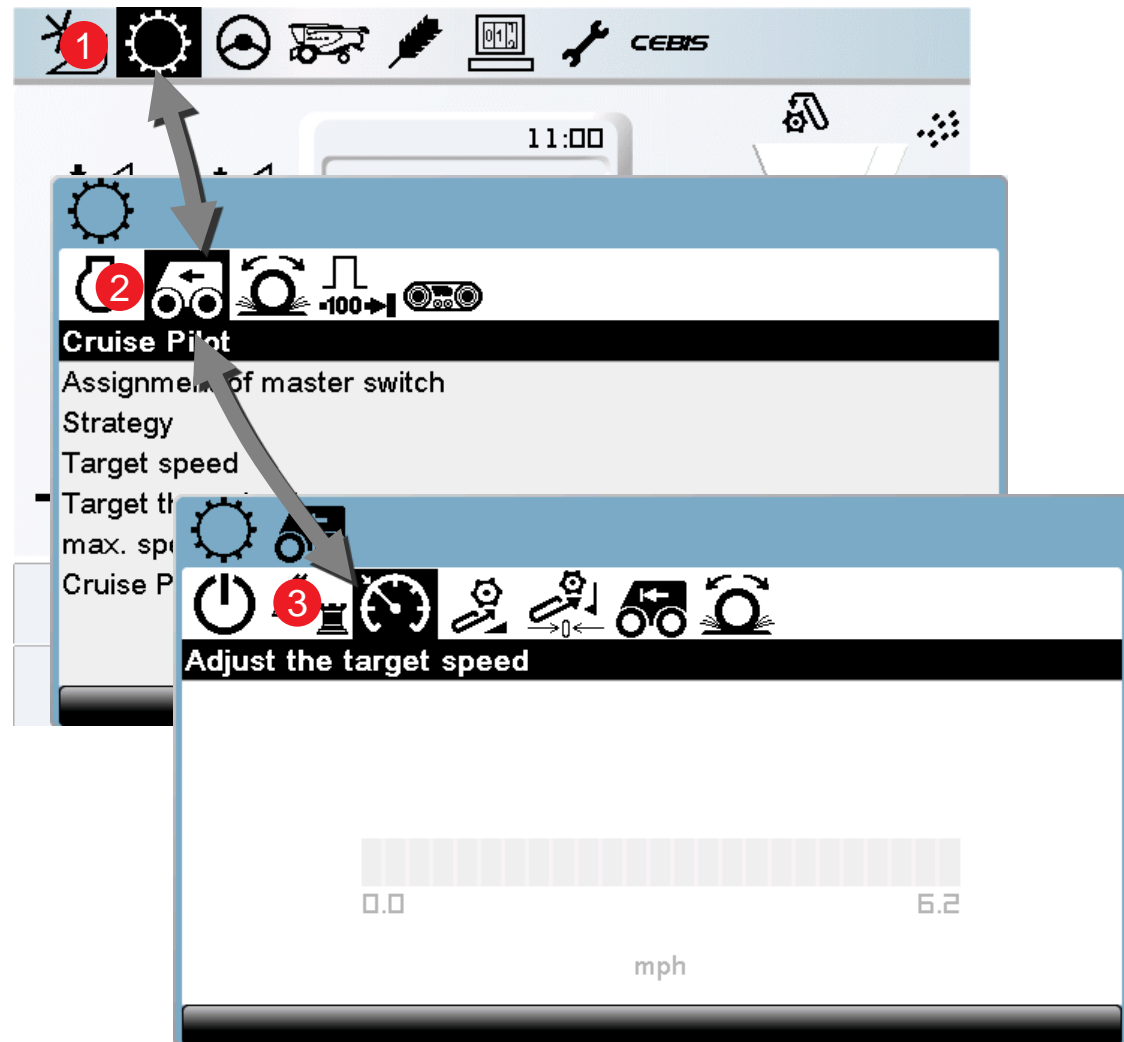


1.3 CLAAS CRUISE PILOT » target speed

Setup on CRUISE PILOT:

Navigation Tips

1. Scroll to the Gear Icon and select it.
 2. Scroll to the Cruise Pilot icon and select it
 3. Scroll to Adjust target speed and select it.
 4. Select and the desired speed can be set
- The combine will meet the engine load max or the speed limitations first before killing the engine
 - It is advised to set the speed to where the operator is comfortable

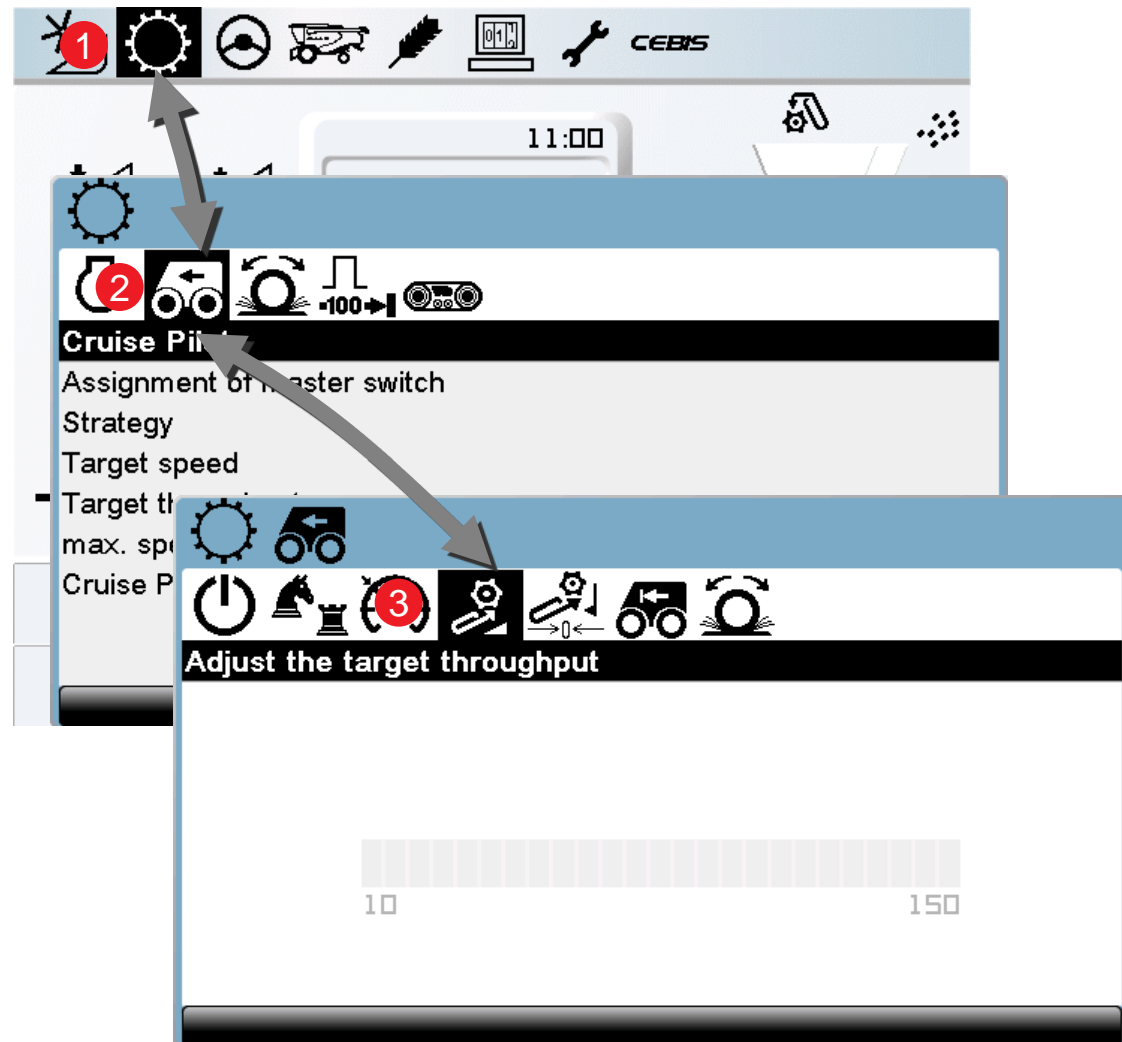


1.4 CLAAS CRUISE PILOT » target throughput

Setup on CRUISE PILOT:

Navigation Tips

1. Scroll to the Gear Icon and select it.
 2. Scroll to the Cruise Pilot icon and select it
 3. Scroll to Adjust target throughput and select it.
 4. Select and the desired throughput can be set in direct correlation to the engine load
- The combine will meet the engine load max or the speed limitations first before killing the engine
 - It is advised to set the throughput to where the operator is comfortable
 - It is advised to set the throughput at a reachable point as the combine will strive to meet that

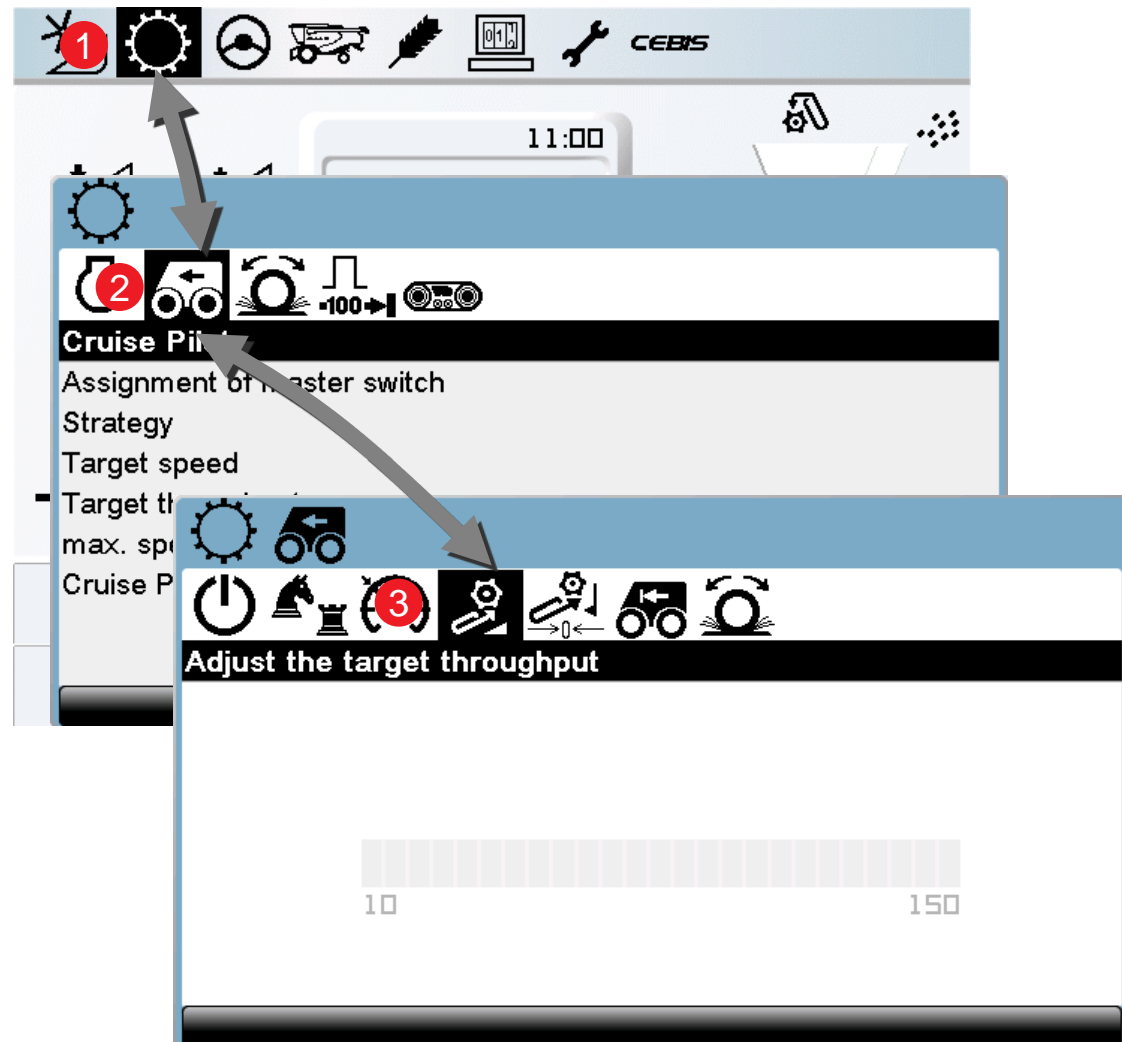


1.4 CLAAS CRUISE PILOT » target throughput (explanation)

Setup on CRUISE PILOT:

Settings explanation

- The target through put is set under this icon
- The number shown is a reference number only
- Engine through put is 0% - 100%, with this setting it has 150 step's between the 0% and 100% engine load.
- This entitles the operator to fine tune the machine even further than 1% of engine load.
- For example the 100 number is between 60% and 70% engine load on the machine

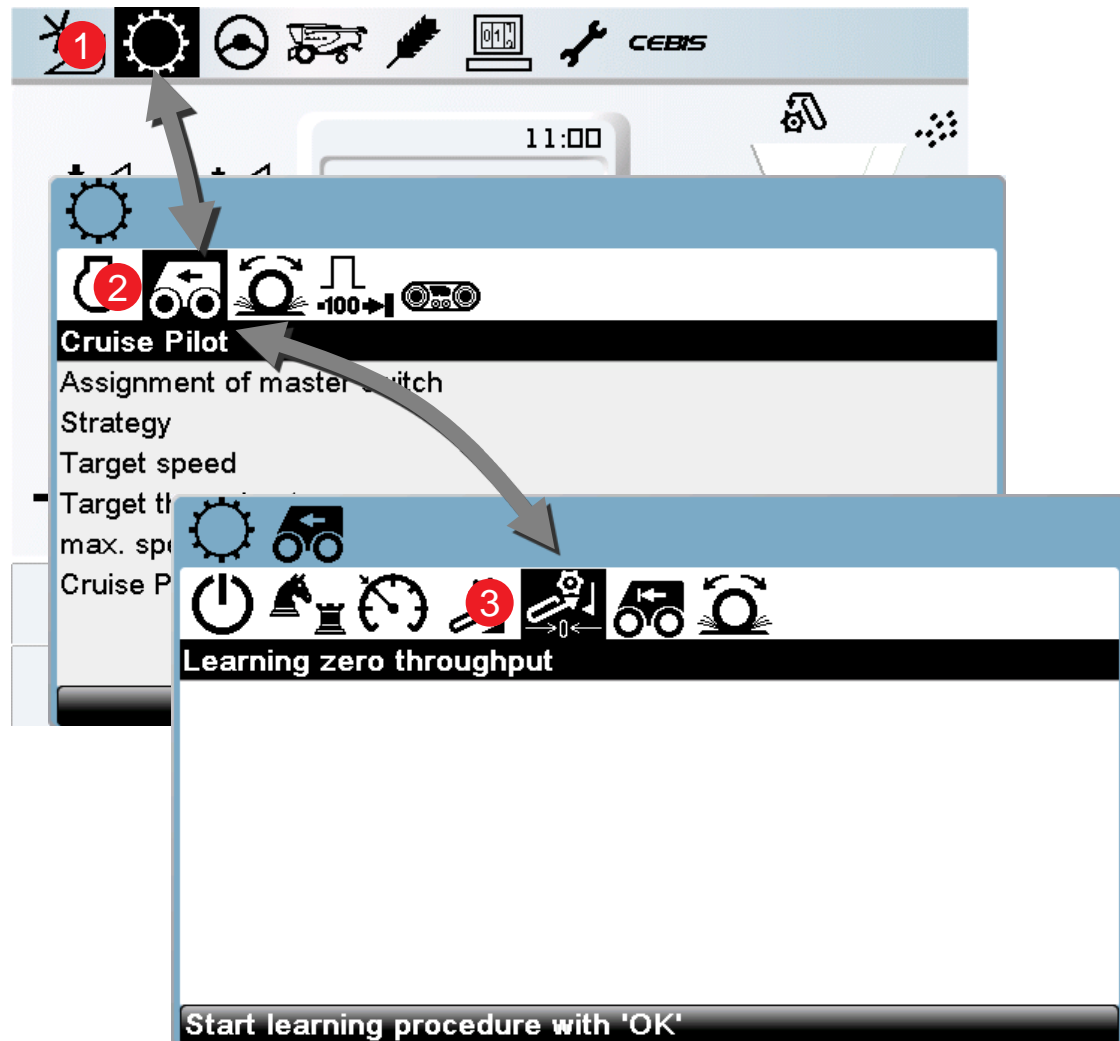


1.5 CLAAS CRUISE PILOT » learning zero throughput

Setup on CRUISE PILOT:

Navigation Tips

1. Scroll to the Gear Icon and select it.
 2. Scroll to the Cruise Pilot icon and select it
 3. Scroll to Learning the zero throughput and select it.
 4. Select and the learning zero throughput will start the learning of the cruise pilot module.
- This process will start the machine at a slow speed to learn the crop properties and then speed up gradually to the set speed

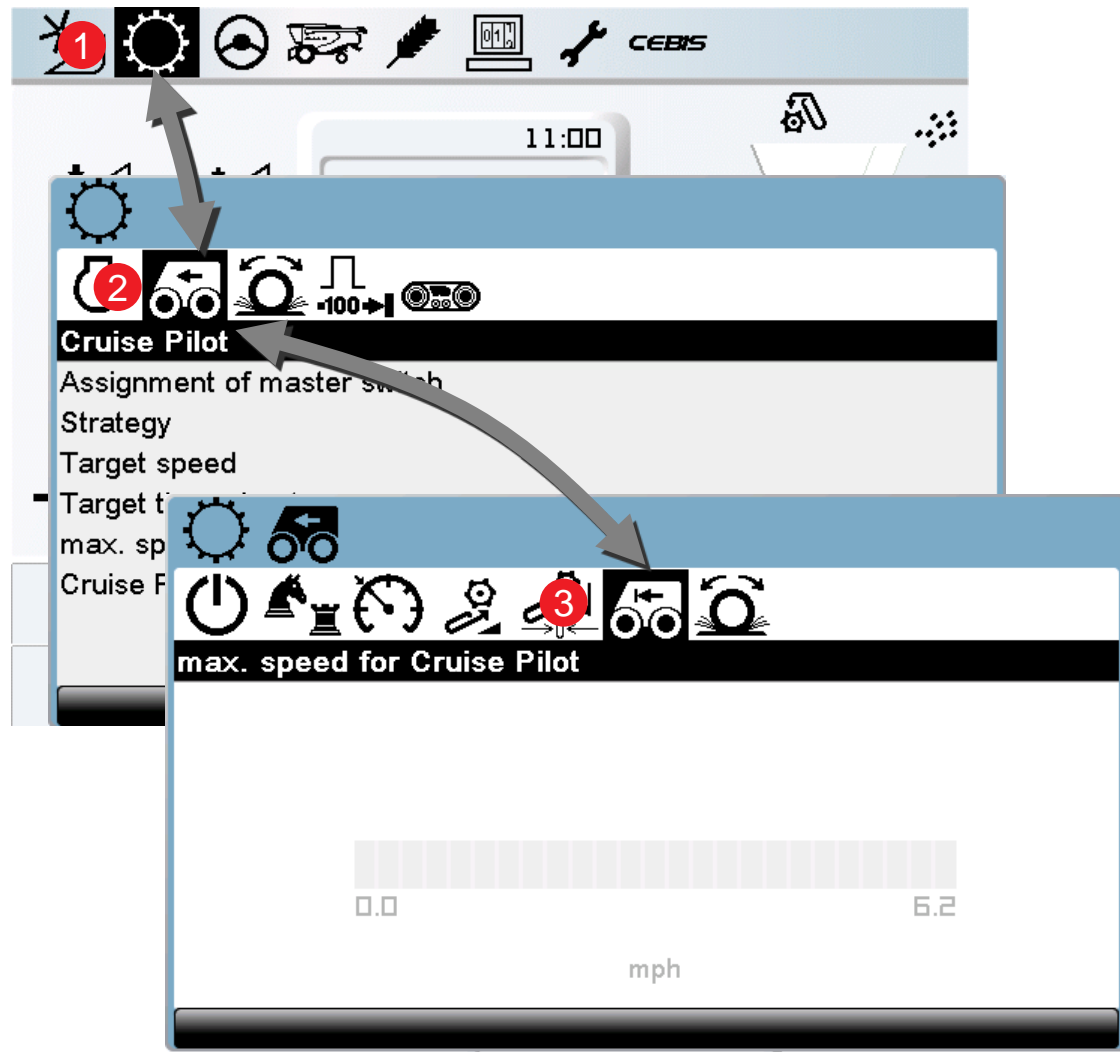


1.6 CLAAS CRUISE PILOT » max speed for Cruise Pilot

Setup on CRUISE PILOT:

Navigation Tips

1. Scroll to the Gear Icon and select it.
 2. Scroll to the Cruise Pilot icon and select it
 3. Scroll to max. speed for Cruise Pilot and select it.
 4. When selected it is possible to set the max. speed for the combine.
- If the desired speed is set to 5mph and the engine load to 95% then the machine with the max speed set to 6mph, if the machine has an engine load of 60% at 5mph then the machine will continue to speed up until it meets 95% or 6mph. At this point it will hold its speed

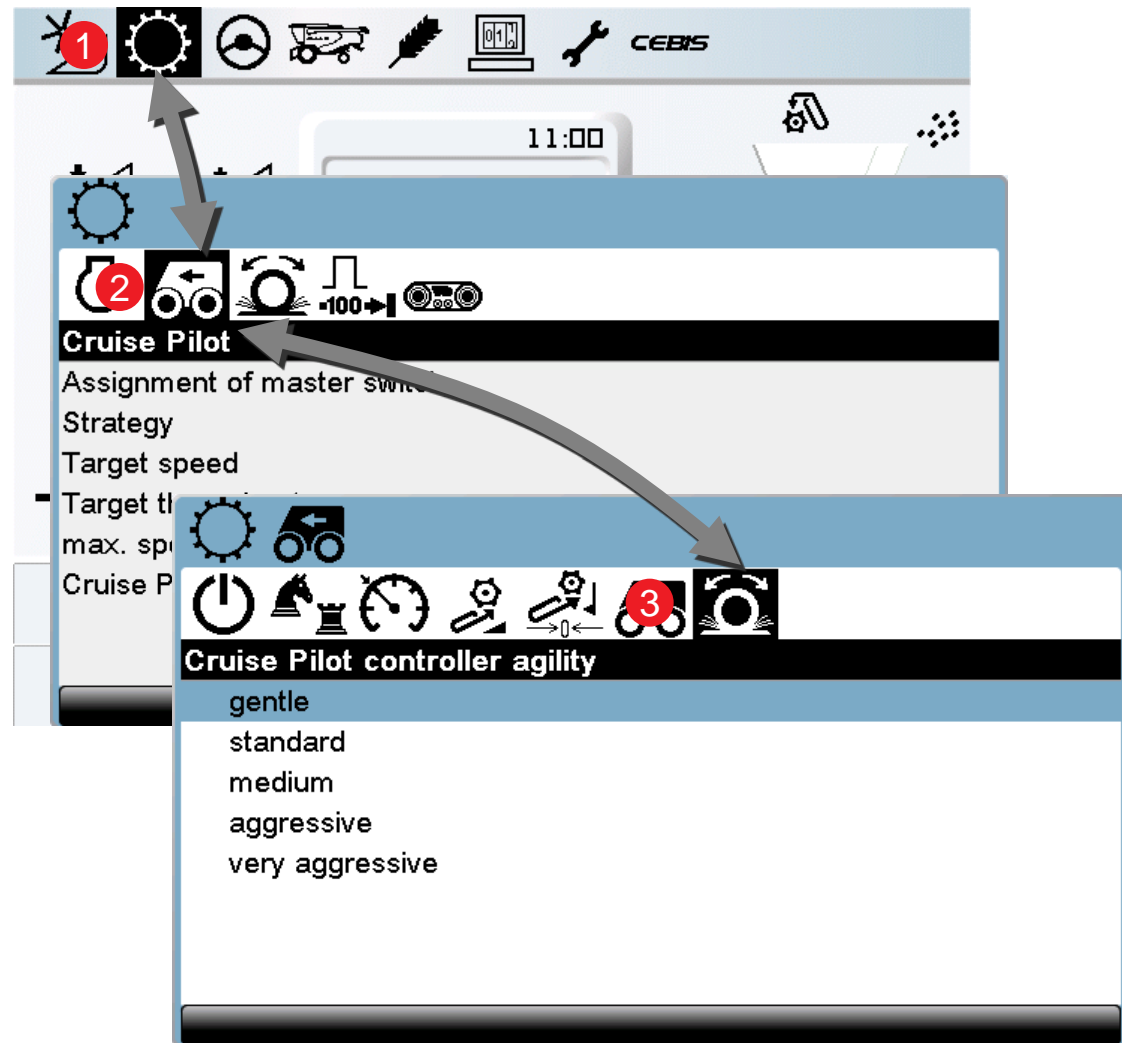


1.7 CLAAS CRUISE PILOT » Cruise Pilot controller agility

Setup on CRUISE PILOT:

Navigation Tips

1. Scroll to the Gear Icon and select it.
2. Scroll to the Cruise Pilot icon and select it
3. Scroll to Cruise Pilot controller agility and select it.
4. This allows the operator select the aggressiveness of the machine reaction to the sensor.

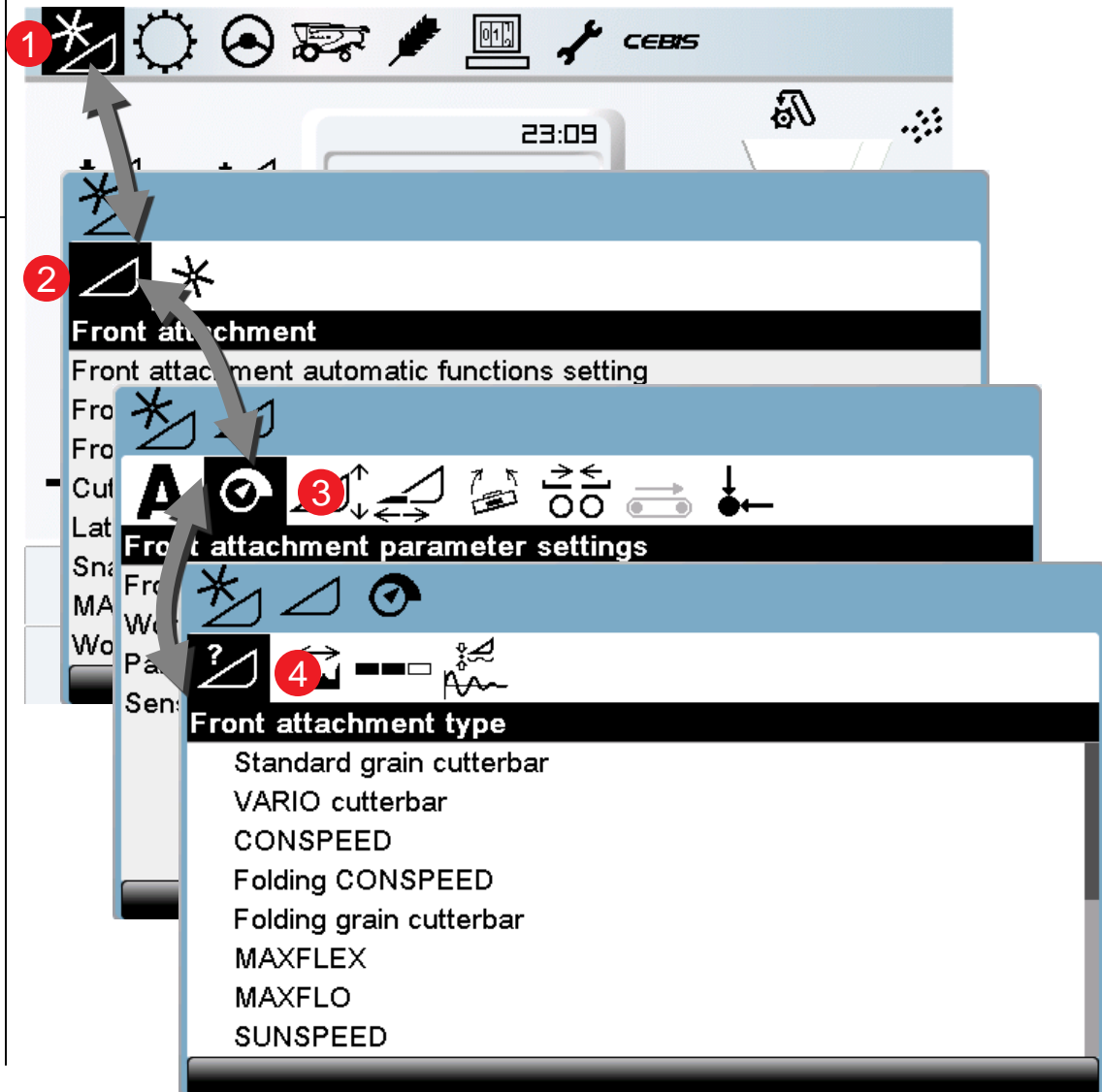


2.1 Front attachment type » setting

Setup on headers:

Navigation Tips

1. Scroll to the Header Icon and select it.
2. Scroll to the Front attachment icon and select it
3. Scroll to Front attachment parameter settings and select it.
4. Scroll to Front attachment type and select it.
5. This allows the operator select the header which will be used during harvest, no settings will be saved under this selection

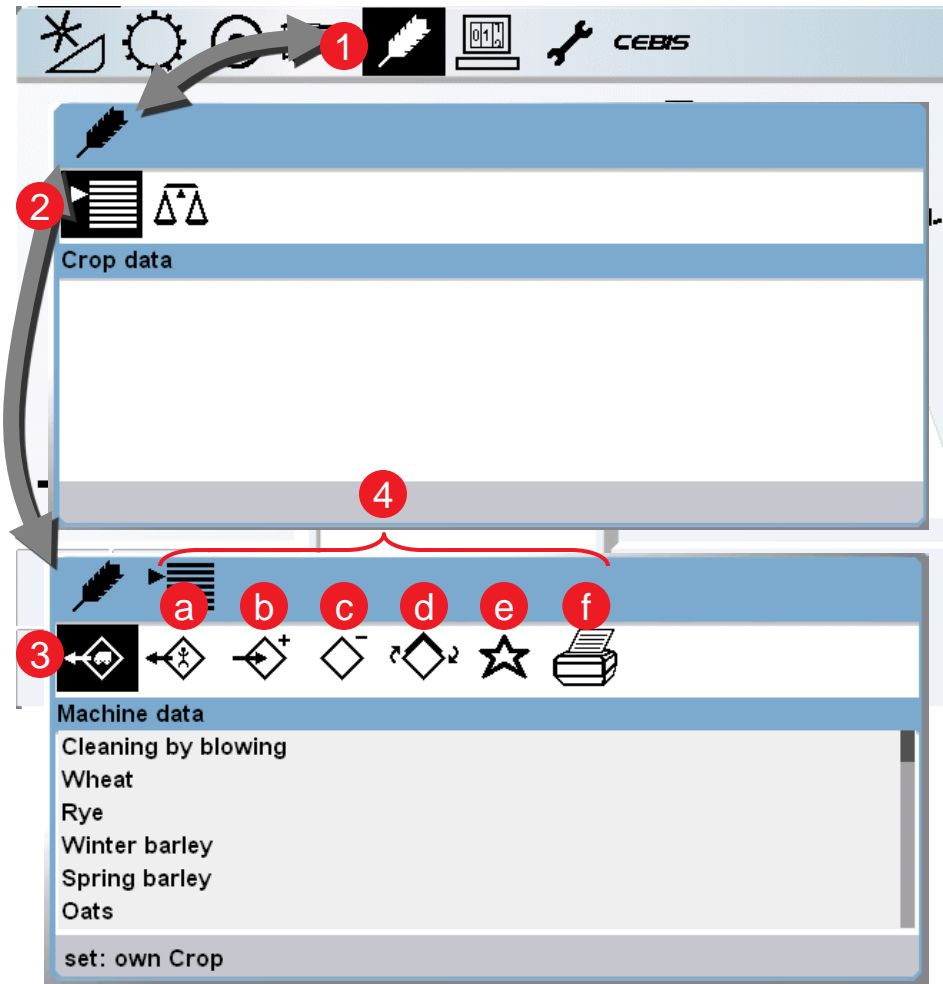


3.1 CEBIS crop data » setting

Learning a saved crop setting or saving your own crop settings

Navigation Tips:

1. Scroll to the crop settings icon and select it.
2. Scroll to the Crop data icon and select it.
3. Scroll to the Machine Data icon and select it.
4. The following options are also available:
 - a) The operators own settings
 - b) Storing your own settings
 - c) Enables the operator to delete previous settings which may be obsolete
 - d) Allows the operator to refine settings
 - e) Enables the operator to set two favorite settings to be displayed on the HOTKEY function
 - f) To print the settings for records



3.2 CEBIS crop data » setting

Loading machine settings:

Navigation Tips:

1. Scroll to the Crop settings icon and select it.
2. Scroll to the Crop data icon and select it
3. Scroll to the Machine data icon and select it.
4. Scroll to Corn and select it.
5. When selected the preset speeds will be displayed in the window shown.
6. The set the preset speeds to reset the machines values press O.K. and the machine will automatically adjust for the crop.
7. The type of crop will also be changed which will directly change the settings for the Quantimeter.

The screenshot shows the CEBIS control interface with the following elements:

- Top Toolbar:** Contains icons for crop settings (1), crop data (2), machine data (3), and a list of crop types (4).
- Crop data menu:** Lists options: Crop data, Machine data, Own data, Storing data, Delete data, Redefine data, Assign favourite.
- Machine data menu:** Lists crop types: Dwarf beans, Peas, Soybeans, Sun flowers, Corn, Corn Cob Mix. The selected option is "set: own CORN 2".
- Loading data table:**

Assembly	Unit	Required	Actual
Feed rake	rpm	420	420
Concave position	mm	26	26
Sensitivity sieves	%	40	40
Sensitivity residual separation system	%	40	40
Type of crop		Corn	Corn
- Instruction Box (6):** "Start adjusting for crop with 'OK'"

3.3 CEBIS crop data » setting

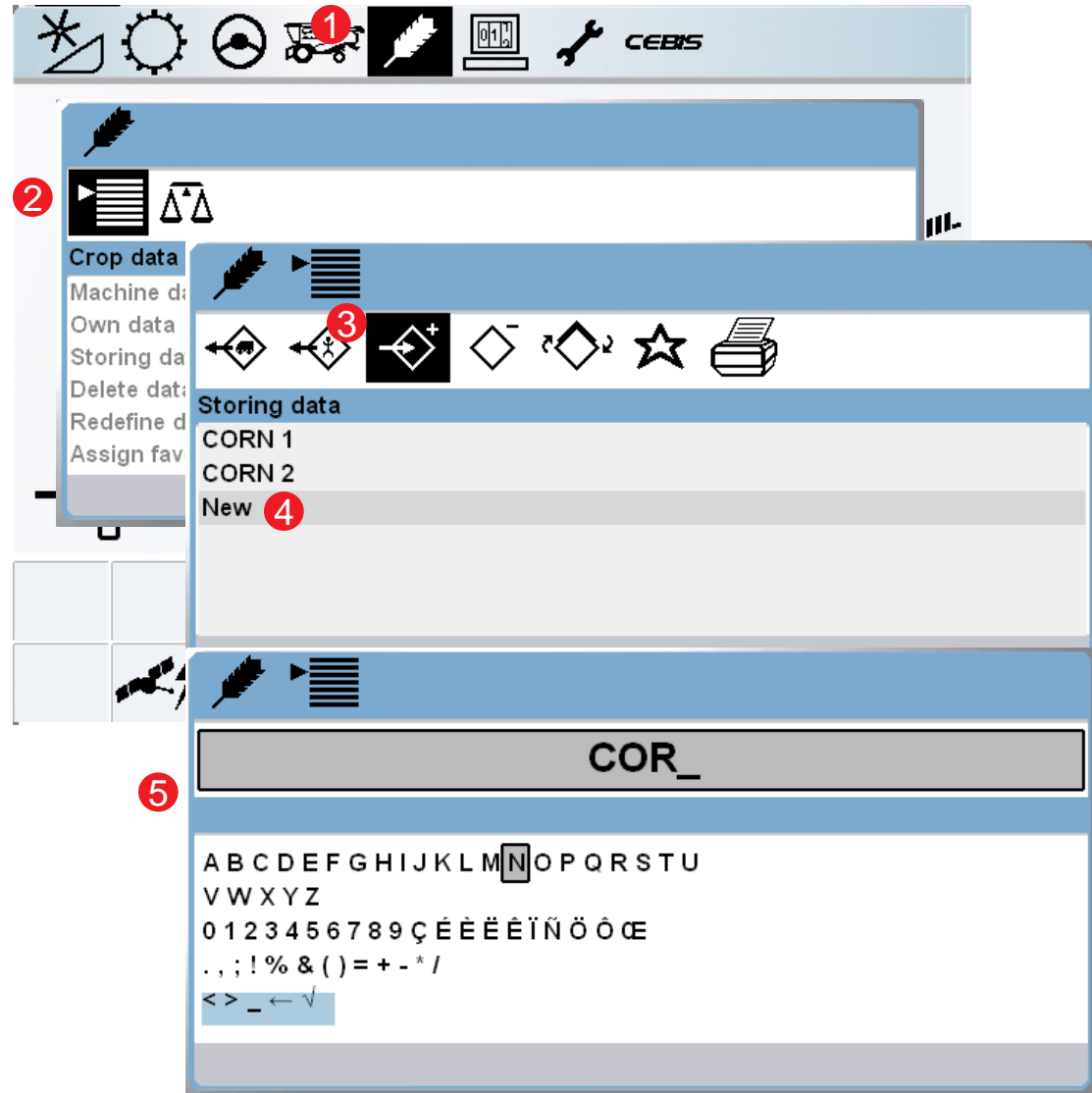
Storing own settings:

Navigation Tips:

NOTE:

For easy operation when harvesting Corn select Corn from machine data to initially set the Combine. After the adjustments have been made by the operator they can be stored by the following steps.

- Scroll to the Crop settings icon and select it.
- Scroll to the Crop data icon and select it
- Scroll to the Storing data icon and select it.
- Scroll to New and select it.
- Letters can be chosen on how to name the setting through scrolling and selecting each letter. Then is saved on screen 4 above New.

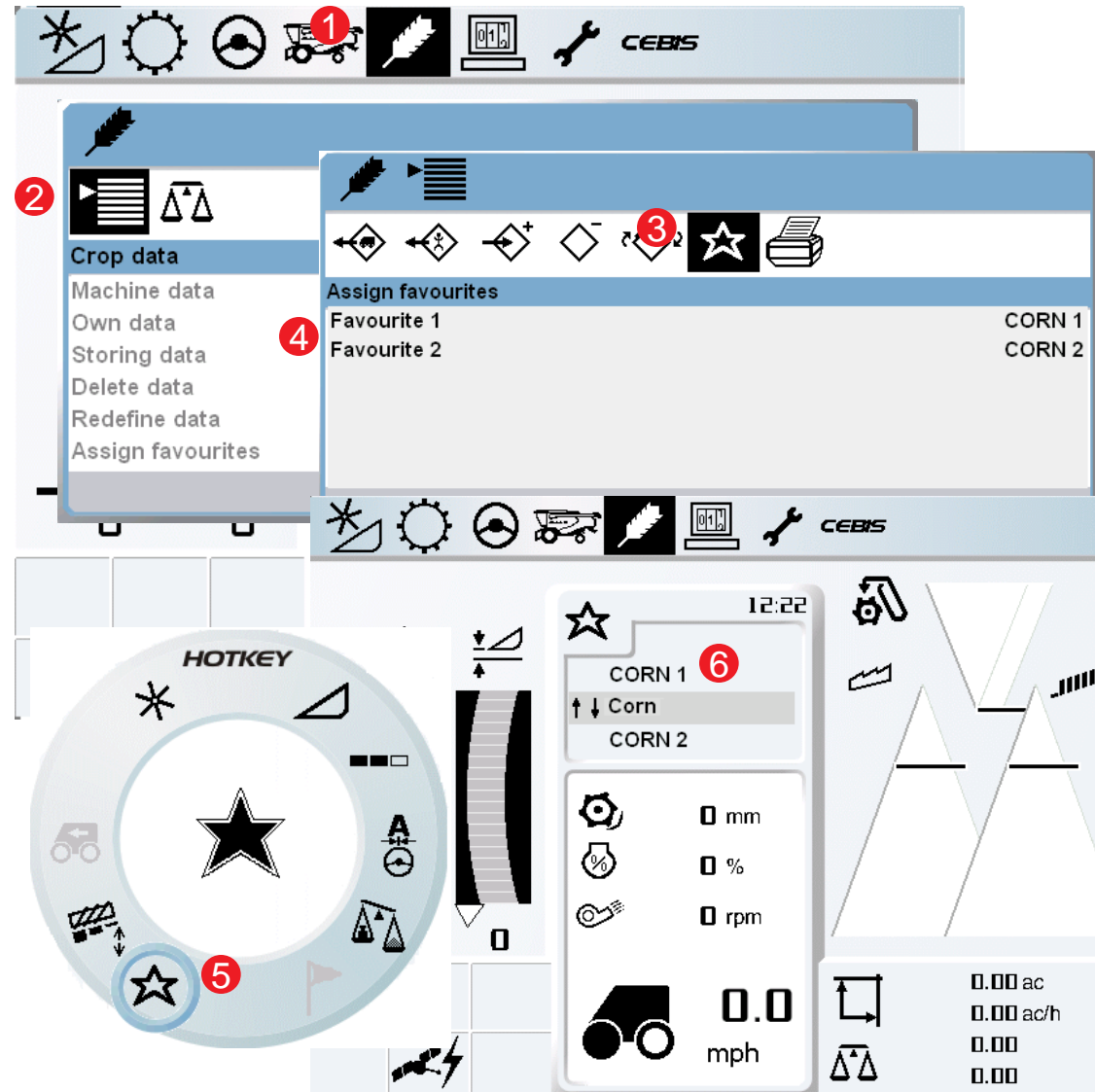


3.4 CEBIS crop data » setting

Setting favorite settings:

Navigation Tips:

1. Scroll to the Crop settings icon and select it.
2. Scroll to the Crop data icon and select it
3. Scroll to the Assign favorites icon and select it.
4. Scroll to Favorite 1 and scroll through the different settings and select the first favorite and repeat for favorite 2.
5. On the HOTKEY the favorites can be directly accessed by selecting the star icon.
6. Two favorites and also one machine setting can be interchanged between to set the combine.

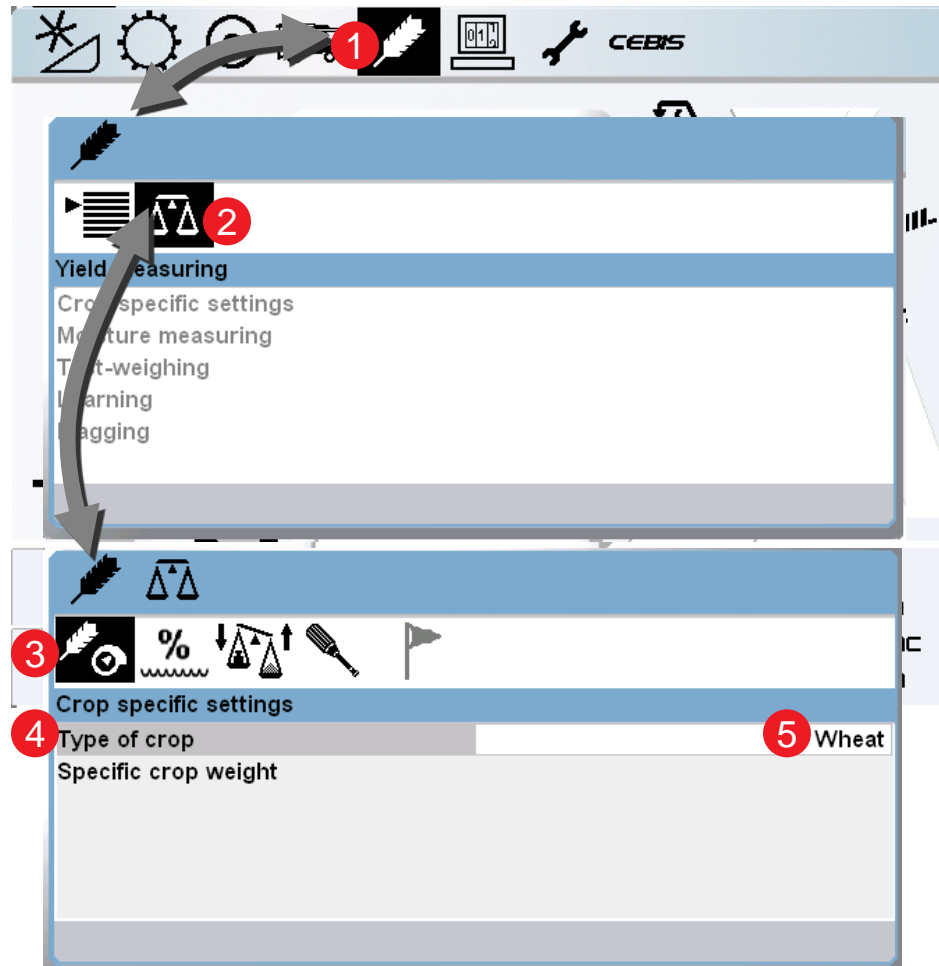


3.5 CEBIS QUANTIMETER » setting

- QUANTIMETER calibration, Crop harvested

Navigation Tips:

1. Scroll to the crop settings icon and select it.
2. Scroll to the Yield measuring icon and select it.
3. Scroll to the crop specific settings icon and select it.
4. Scroll to Type of crop and select it.
5. Choose the crop being harvested



3.6 CEBIS QUANTIMETER » setting

QUANTIMETER calibration: Moisture Measuring

Navigation Tips:

1. Scroll to the crop settings icon and select it.
2. Scroll to the Yield measuring icon and select it.
3. Scroll to the moisture measuring icon and select it.
4. Here you can change the following parameter:
 - a) Status (turn moisture measuring on / off)
 - b) Moisture correction (calibration of moisture meter)
 - c) Display of yield with storage moisture
 - d) Adjust storage moisture
 - e) Display of current moisture.



3.7 CEBIS QUANTIMETER » setting

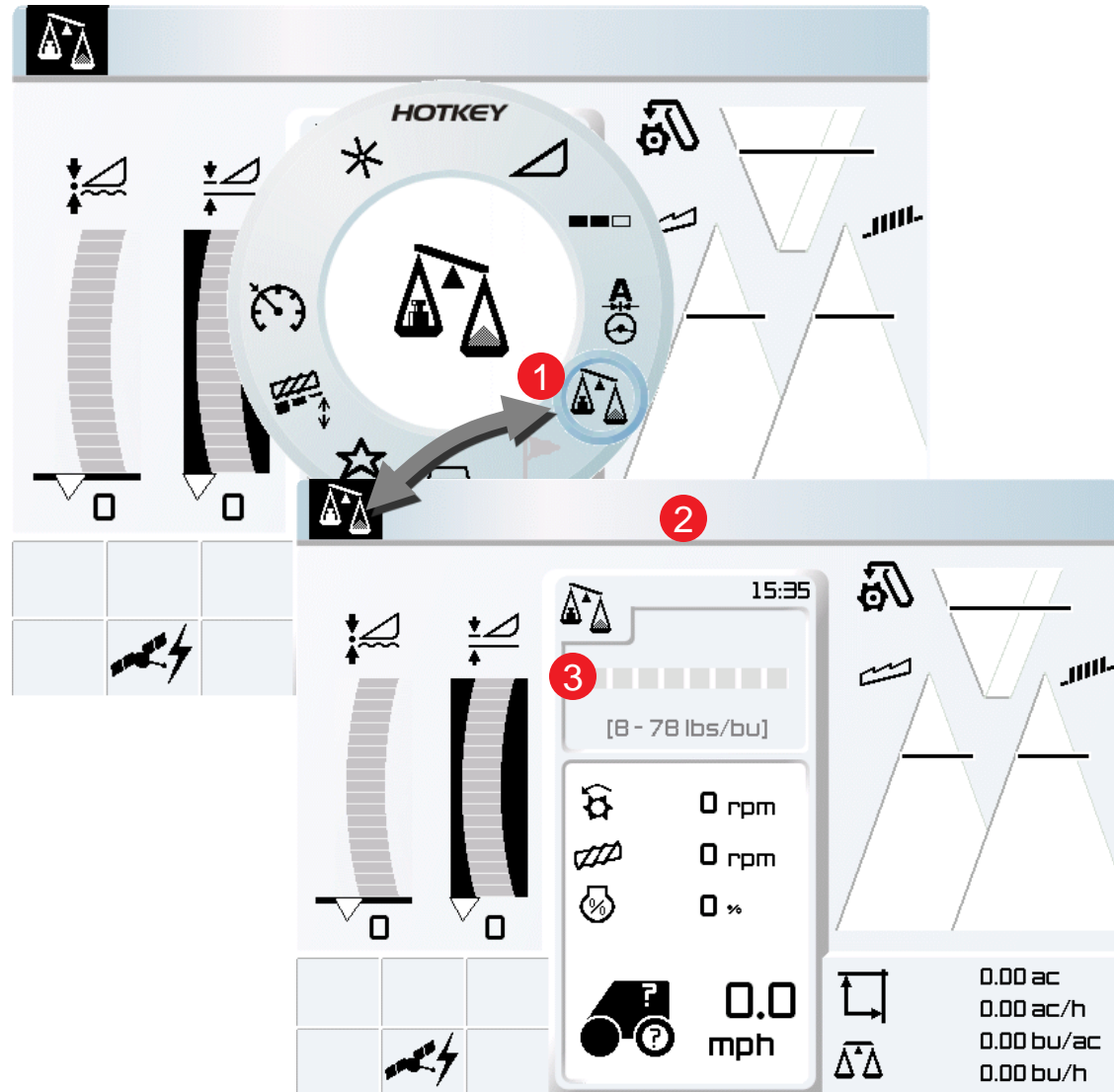
- QUANTIMETER calibration, Bulk density:

Navigation Tips:

1. Turn the HOTKEY dial to the scales icon
2. The screen will return to the harvest display as shown
3. The crop density (lb/bu) can be adjusted by rotating the HOTKEY selector until the correct value is displayed in window 3.
4. **ONLY** to be set before completing calibration

NOTE:

lbs/bu must be set before the weight measured function can be used. This way when the weight measured is entered into CEBIS the optimum calibration is used



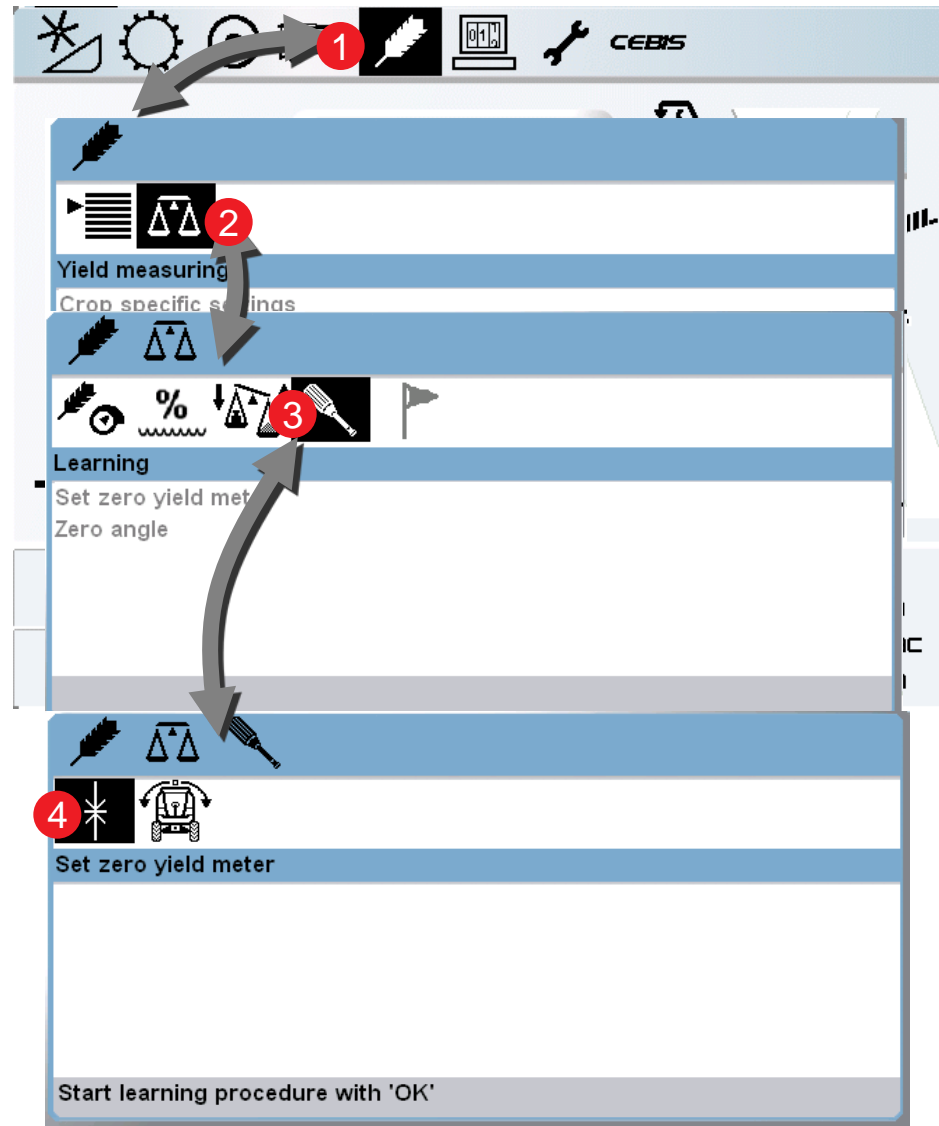
3.8 CEBIS QUANTIMETER » setting

QUANTIMETER calibration: Zero yield

Navigation Tips:

1. Scroll to the Crop settings icon and select it.
2. Scroll to the Yield measuring icon and select it
3. Scroll to the Learning icon and select it.
4. Scroll to Set zero yield meter and select it.

Here, the QUANTIMETER will learn zero clean grain flow



3.9 CEBIS QUANTIMETER » setting

- QUANTIMETER calibration: Zero angle

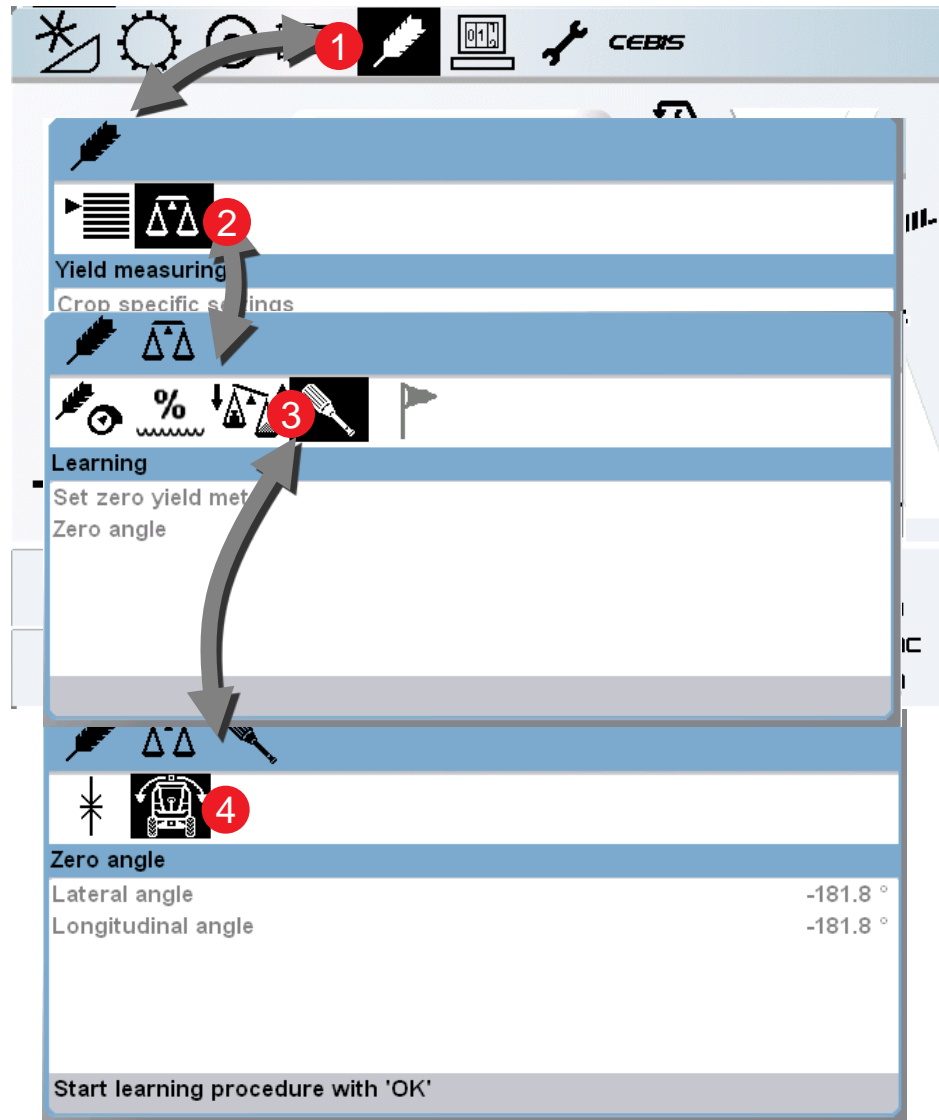
Navigation Tips:

Note:

The combine must be on level ground when this function is calibrated for accurate results

1. Scroll to the Crop settings icon and select it.
2. Scroll to the Yield measuring icon and select it.
3. Scroll to the Learning icon and select it.
4. Scroll to Zero angle and select it.

Here, the QUANTIMETER will learn the zero angle of the machine



3.10 CEBIS QUANTIMETER » setting

- QUANTIMETER calibration – Starting Yield Measuring

Navigation Tips:

1. Scroll to the crop settings icon and select it.
2. Scroll to the Yield measuring icon and select it.
3. Scroll to the test weighing icon and select it.
4. Scroll to Status and select it – scroll to “On” and select it. – Test weighing has begun. Harvest a grain tank full or a truck load.

You may continue harvesting and select “Esc” to get the harvest display

Calibration steps continued on next page...



3.11 CEBIS QUANTIMETER » setting

- QUANTIMETER calibration – Stopping Yield Measuring

Navigation Tips:

After the grain tank or truck is full....

1. Scroll to the crop settings icon and select it.
2. Scroll to the Yield measuring icon and select it.
3. Scroll to the test weighing icon and select it.
4. Scroll to Status and select it – scroll to “off” and select it. – Test weighing has stopped.

Harvest can continue until the grain tank or truck is weighed.

Calibration continues on next page...



3.12 CEBIS QUANTIMETER » setting

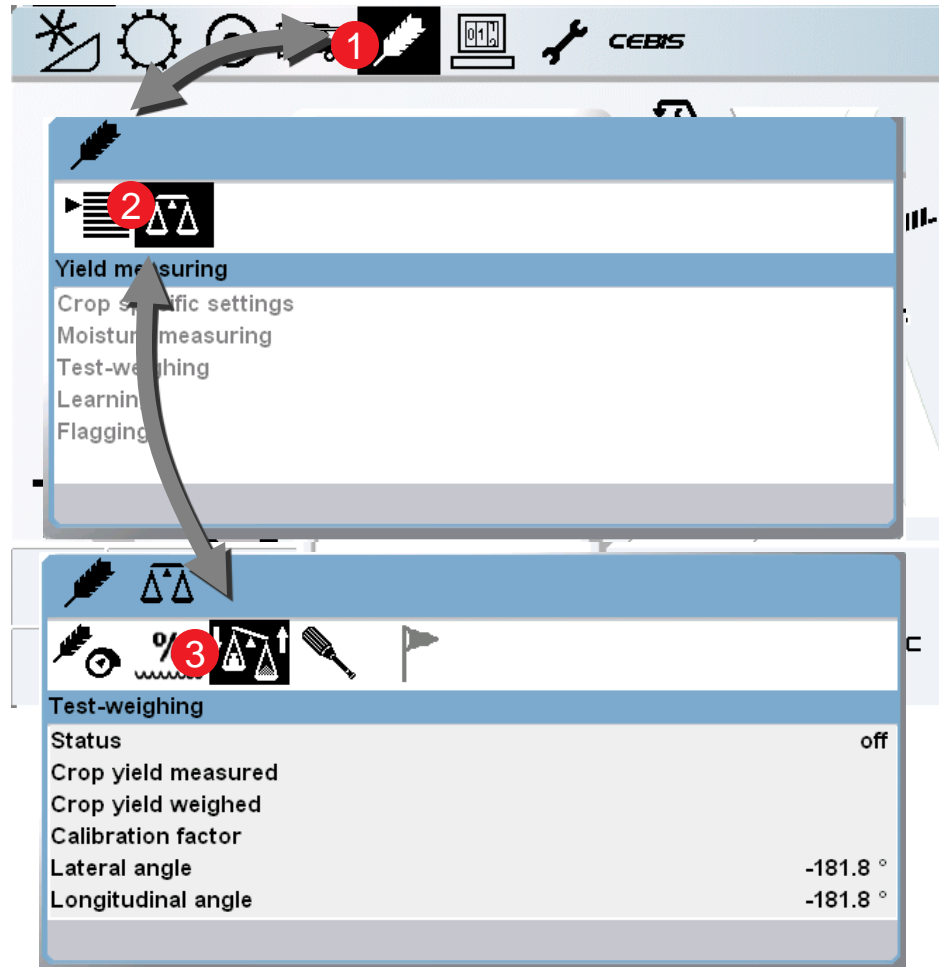
- QUANTIMETER calibration – Entering Yield Weighed

Navigation Tips:

After the grain tank or truck has been weighed....

1. Scroll to the crop settings icon and select it.
2. Scroll to the Yield measuring icon and select it.
3. Scroll to the test weighing icon and select it.
4. Scroll to Crop yield weighed and select it – scroll to increase or decrease the value to match the weighed grain tank full or truck load – select it to accept the value.

This portion of the QUANTIMETER calibration is complete.



3.13 CEBIS crop data » strongly recommended

Storing own settings:

Navigation Tips:

NOTE:

When all settings are completed the settings need to be stored and it is recommended to create a new favorite so all the calibration's are saved, so this way there will be no inaccuracies in the Yield Data

