

CEBIS Yield Mapping

Using appropriate software, you can prepare field data, which you can then call up and process with CEBIS.

EASY

Efficient Agriculture
Systems by CLAAS.



on board



on field



on track



on farm



Table of Contents



Table of Contents	2
Chapter 1: Material and Software Requirements	3
Chapter 2: Software Population	4-9
Chapter 3: Compact Flash Card Preparation	10-19
Chapter 4: CEBIS	20-23
Chapter 5: Data transmitting	24-30
Chapter 6: FAQs	31



Chapter 1: Material and Software Requirements

Material:

- Q07 0030 Yield Measuring
- Q07 0037 Moisture Meter
- Q07 0038 Moisture Meter MAD
JAG Wear Plates
- Q07 0171 Yield Mapping
- **Q07 0037, 0038, 0171 Must Order
Q07 0030**
- Q15 0030 Communication Module
(Standard 2012 or later models)
- CF (Compact Flash) Card
- CF Card Reader (USB)



Software:

- AG Leader SMS



OR

- Trimble Farm Works



A DIVISION OF TRIMBLE



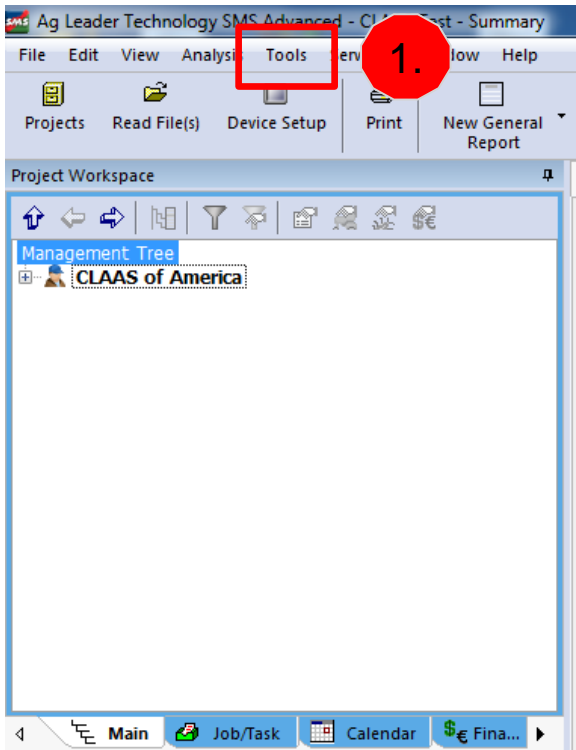
Chapter 2: Software Population

AG Leader:



Step 1: Client Setup

1. Click Tools.
2. Select “Management Item Editor”.

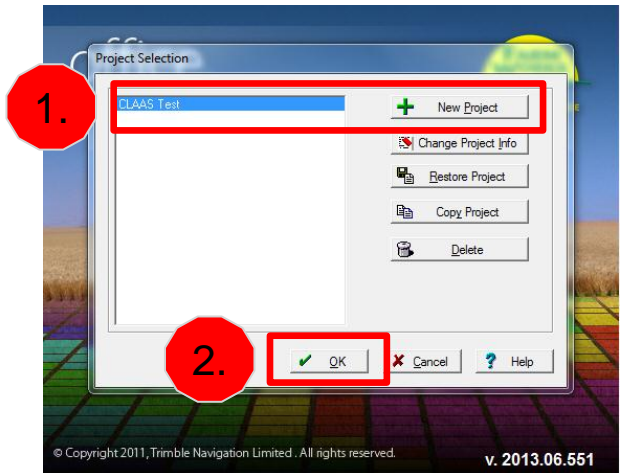


Trimble:



Step 1: Project Selection

1. Select an existing Project or “Add New” project.
2. Highlight desired Project and click “OK”.





Chapter 2: Software Population

AG Leader:

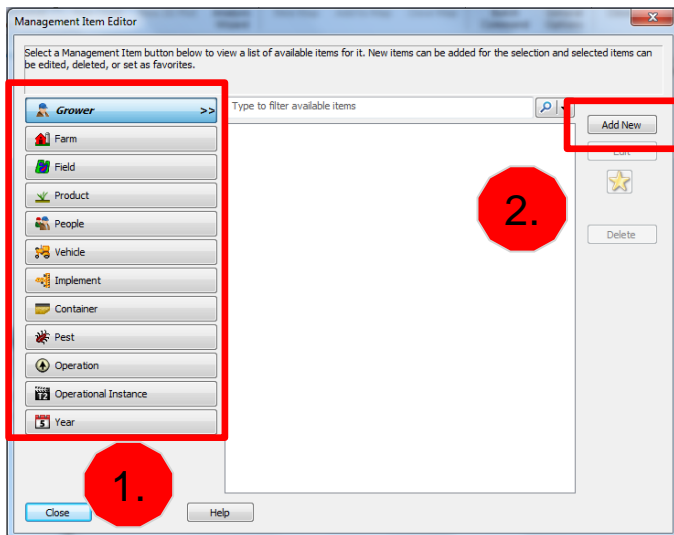


Trimble:



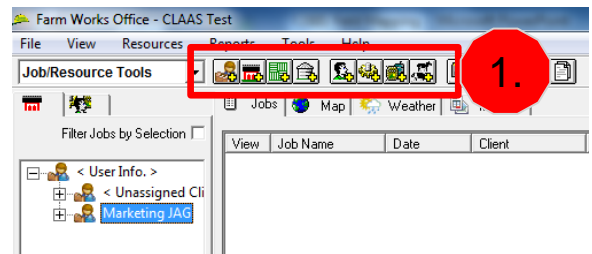
Step 2: Populate Management Items

1. Start at top with “Grower” and populate each “Management Item” with all potential sub “items” that are relevant to the instance. Must have Grower, Farm, Field, Product, People for CEBIS. Recommendation for your records is to populate Vehicle, Implement, Year.
2. Select “Add New” if sub “item” desired does not exist. New items cannot be added in CEBIS.



Step 2: Populate “Resources”

1. Start at left with “Client” and populate each “Resource” with all potential sub “items” that are relevant to the instance. Must have Client, Farm, Field, Person, Commodities for CEBIS. New items cannot be added in CEBIS.



http://www.farmworks.com/support/flash/player.php?movie=/Trac/Setup_Clients.wmv
http://www.farmworks.com/support/flash/player.php?movie=/Trac/Setup_People.wmv
http://www.farmworks.com/support/flash/player.php?movie=/Trac/Setup_Equipment.wmv
http://www.farmworks.com/support/flash/player.php?movie=/Trac/Setup_Fields.wmv





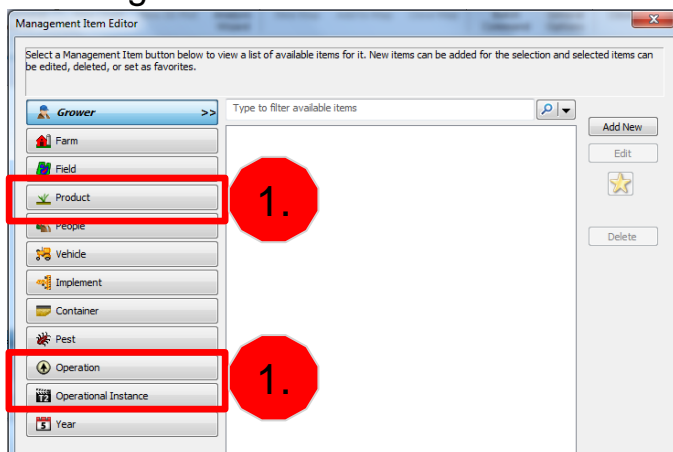
Chapter 2: Software Population

AG Leader:



Step 2: Populate “Management Items” Continued

1. Product, Operation, and Operational Instance “Management Items” must populate sub “items” with parameters relevant to the instance. For example, if the product is Alfalfa and it does not exist in the Product list, the item would have to be populated using Add New.
2. All remaining “Management Items” are instance specific and must be populated without generic information.



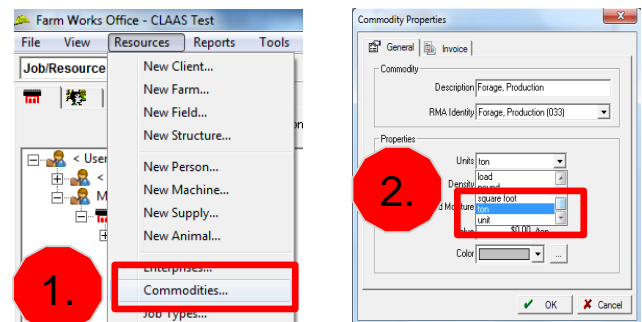
Trimble:



Step 2: Populate “Resources” Continued

1. Click “Resources” and select “Commodities” to enter in crop type planned to harvest.
2. Within “Commodity Properties”, change Units to your preference for measurement. Example: ton or bushel.

Note: For crops such as Alfalfa with multiple harvests. It is recommended that a commodity is created for each harvest. Example: Alfalfa 1st Cutting, Alfalfa 2nd Cutting, etc.





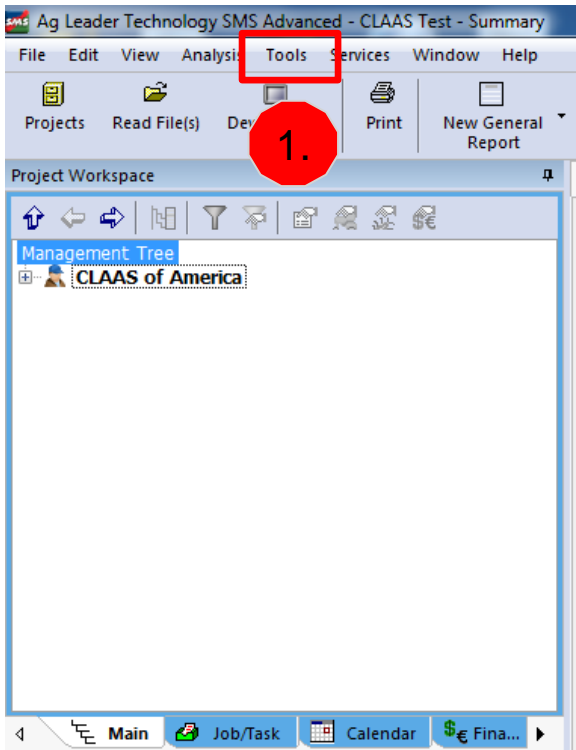
Chapter 2: Software Population

AG Leader:



Step 3: Attributes Setup

1. Click Tools.
2. Select "Attribute Editor".

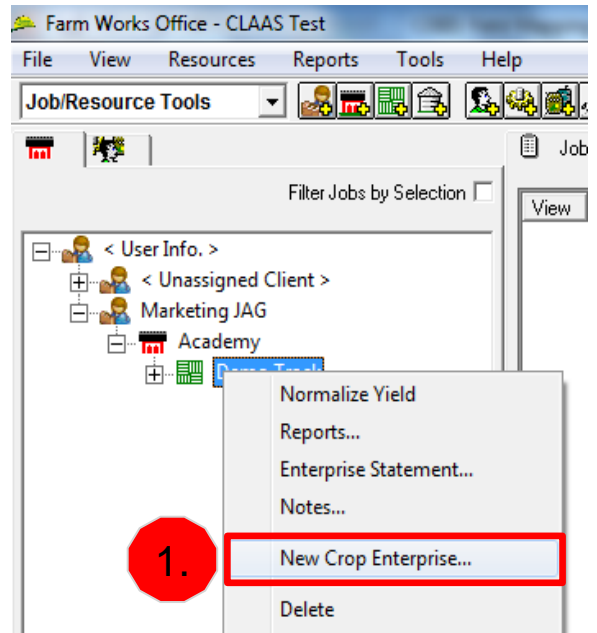


Trimble:



Step 3: Assign Commodities to Field

1. Right click on "field" and select "New Crop Enterprise" to populate the crop specific to the field.





Chapter 2: Software Population

AG Leader:



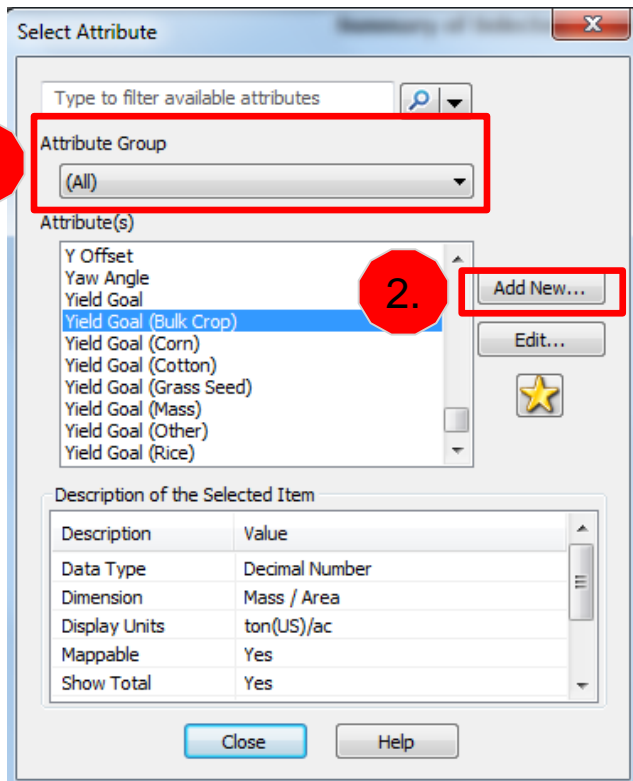
Trimble:



Step 3: Attributes Setup Continued

1. "Attribute Group" selection "All" are prepopulated attributes.
2. "Add New" allows you to add an "Attribute" that is not in the prepopulated list of attributes. Yield Goals are recommended.

Skip to Chapter 3 on page 10





Chapter 2: Software Population

AG Leader:



Trimble:



Step 3: Attributes Setup Continued

1. From the “Display Units” drop down list, select the measurement ratio appropriate.
2. Click “OK” to save. Set display units for each Attribute.

Skip to Chapter 3 on page 10

Attribute Editor

Name: Yield Goal (Bulk Crop)

Abbreviated Name: Yld GI Blk

Attribute Group: Crop Production [Edit...]

Data Type: Decimal Number

Display Type: [Add] [Edit]

Dimension: Mass / Area [Selection Groups...]

Display Units: ton(US)/ac **1.**

Mappable

Favorite

Show Total

Total Units: ton(US)

2. [OK] [Cancel] [Help]



Chapter 3: Compact Flash Card Preparation

AG Leader:



Step 1: Connect CF Card

1. Insert CF card into reader.
2. Insert reader USB into computer.



Trimble:

Step 1: Connect CF Card

1. Insert CF card into reader.
2. Insert reader USB into computer.

1.



1.



2.



2.





Chapter 3: Compact Flash Card Preparation

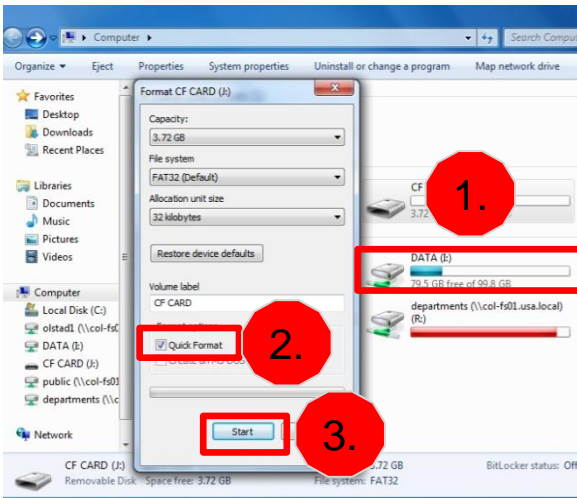
AG Leader:



Step 2: Format Card From PC

1. Right click CF card drive and select “Format”.
2. Check box “Quick Format”.
3. Click “Start” button.

Note: This will erase all information currently stored on card.



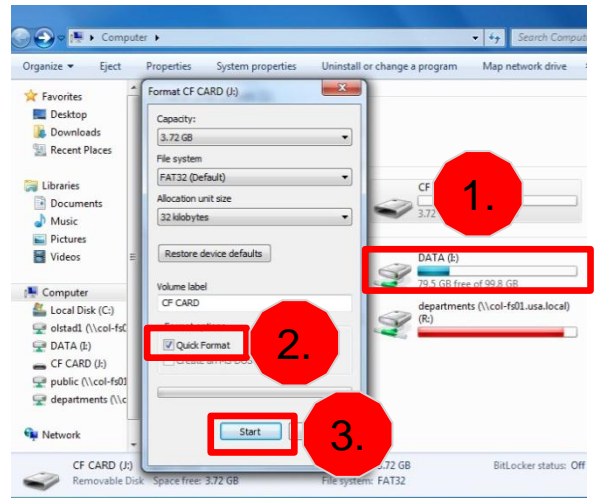
Trimble:



Step 2: Format Card From PC

1. Right click CF card drive and select “Format”.
2. Check box “Quick Format”.
3. Click “Start” button.

Note: This will erase all information currently stored on card.





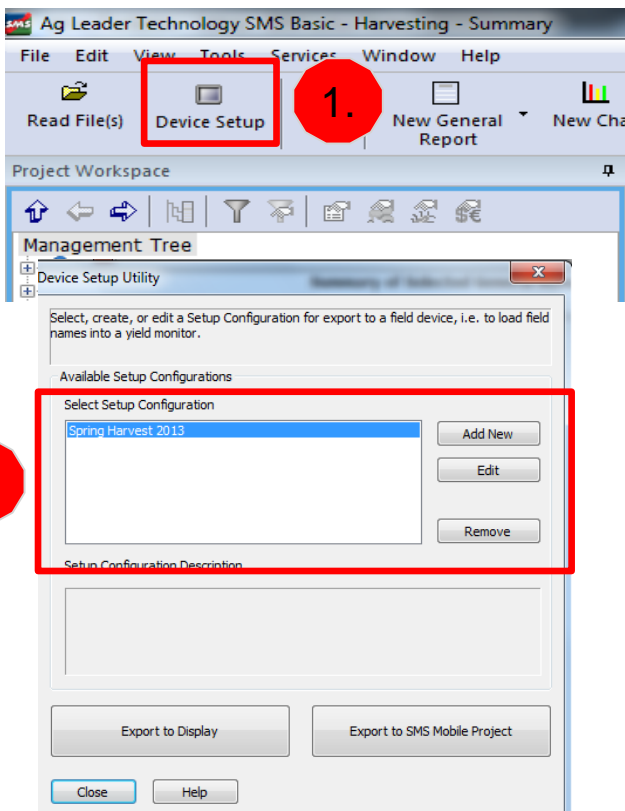
Chapter 3: Compact Flash Card Preparation

AG Leader:



Step 3: Device Setup

1. Click “Device Setup” to open the “Device Setup Utility” screen.
2. Select an existing Setup Configuration or Add New to create one.

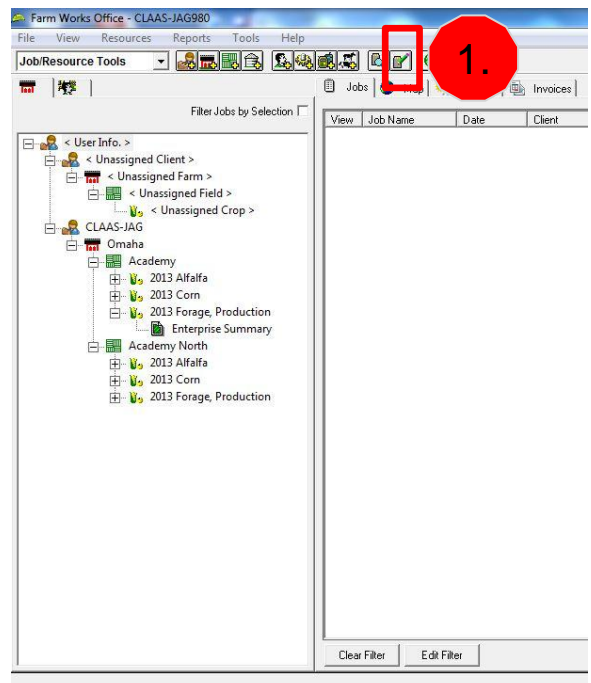


Trimble:



Step 3: Device Setup

1. Click “Write Job Data” icon.





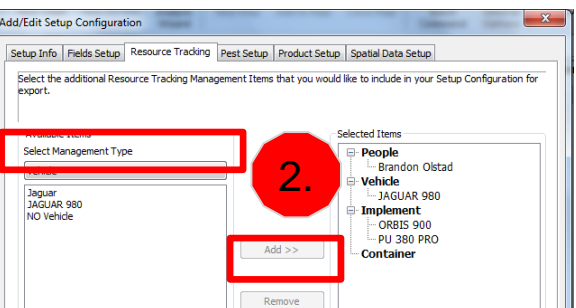
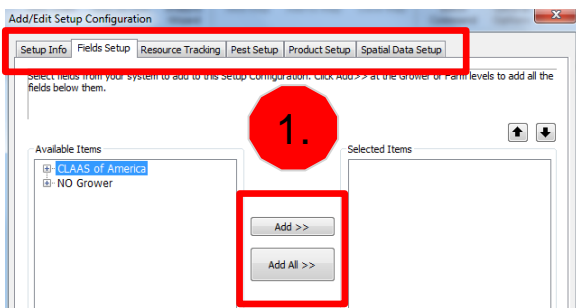
Chapter 3: Compact Flash Card Preparation

AG Leader:



Step 3: Device Setup Continued

1. If you clicked “Add New” for Setup Configuration, follow the prompt screens or tabs and be sure to “Add>>” items before clicking the “Next” button.
2. In Resource Tracking, “Add>>” the appropriate “Container, Vehicle, Implement, and People” from the “Select Management Type” drop down.

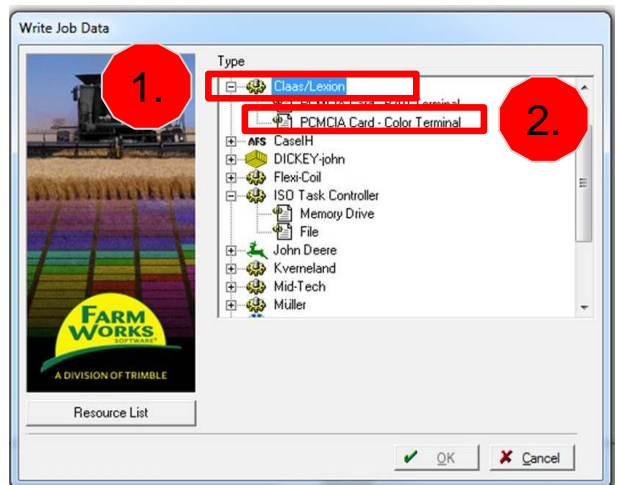


Trimble:



Step 3: Device Setup Continued

1. Click on “Claas – Lexion” to open the drop down list and select “Cebis card – color terminal”.
2. Click “Advanced Setup”.





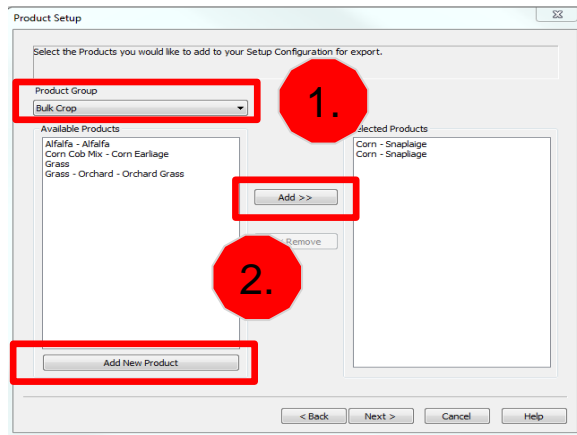
Chapter 3: Compact Flash Card Preparation

AG Leader:



Step 3: Device Setup Continued

1. In Product Setup, select the “Product Group” from the drop down list.
2. “Add>>” the appropriate “Available Products” or “Add New Product”.

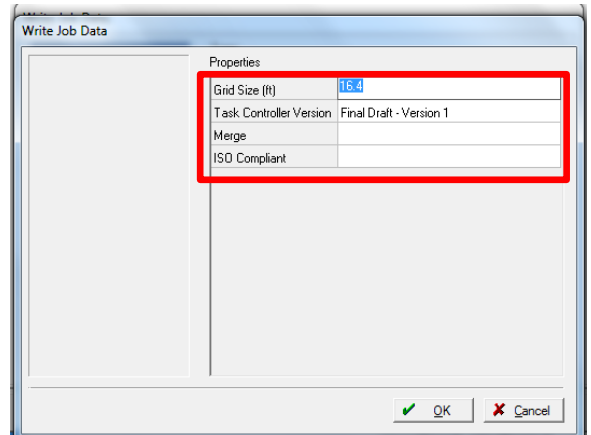


Trimble:



Step 3: Device Setup Continued

1. Verify Grid size 16.4 and Task Control Version – Version 1.





Chapter 3: Compact Flash Card Preparation

AG Leader:

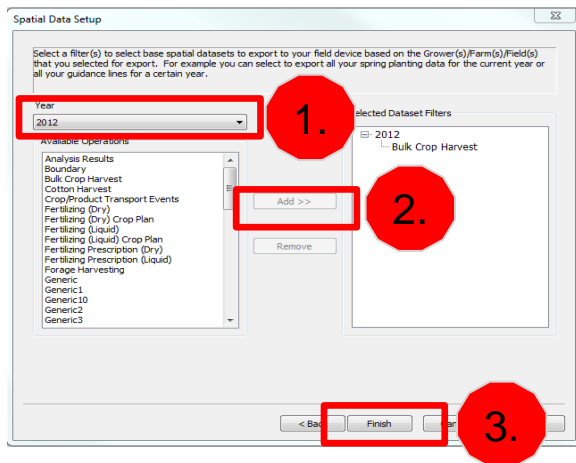


Trimble:



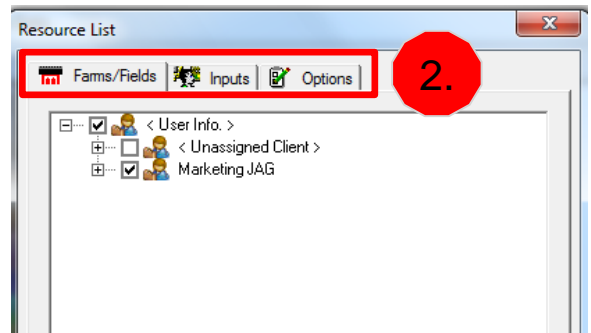
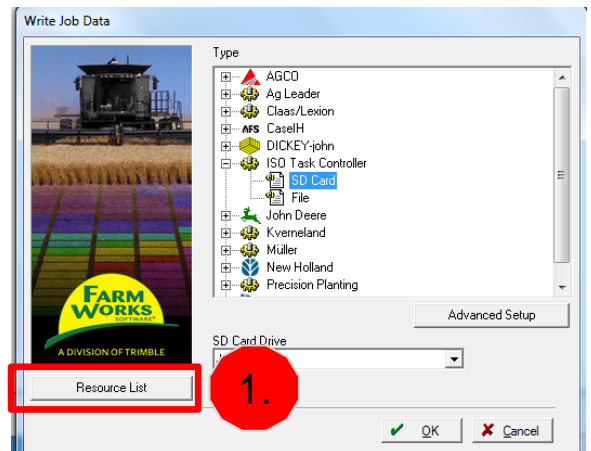
Step 3: Device Setup Continued

1. In Spatial Data Setup, select the "Year" from the drop down list.
2. "Add>>" the appropriate "Available Operations".
3. Click "Finish" button.



Step 3: Device Setup Continued

1. Click on Resource List.
2. Verify the Farm/Fields, Inputs, and Options desired have a check mark in the box.





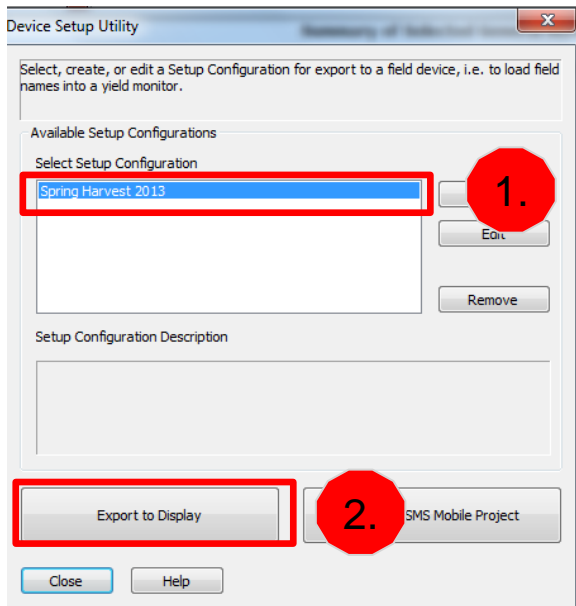
Chapter 3: Compact Flash Card Preparation

AG Leader:



Step 4: Device Setup Export

1. In Device Setup, select the Setup Configuration for an existing option or the one that was just added.
2. Click “Export to Display”.

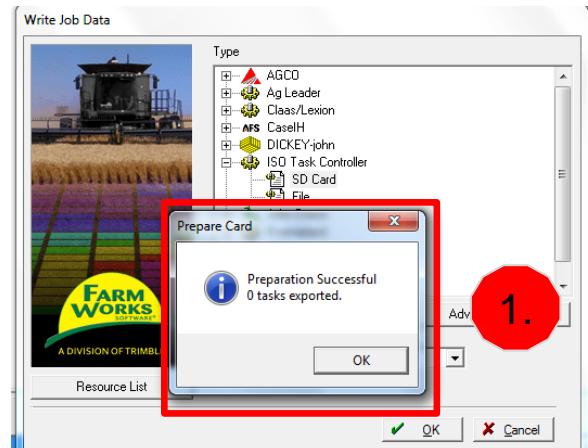


Trimble:



Step 3: Device Setup Continued

1. Verify preparation successful and click “OK”.





Chapter 3: Compact Flash Card Preparation

AG Leader:



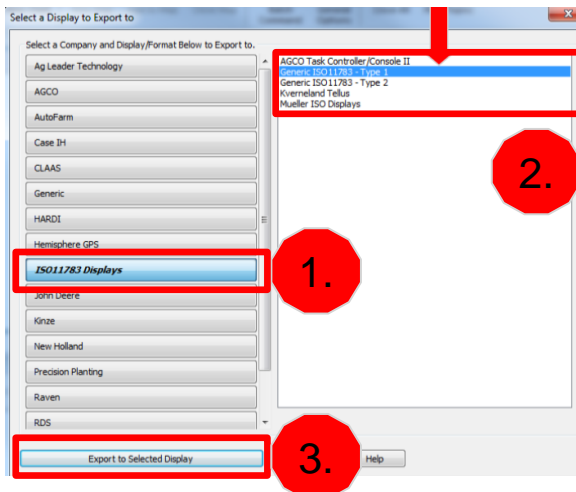
Trimble:



Step 4: Device Setup Export

1. In Select a Display to Export to, select “ISO11783 Displays”, NOT CLAAS.
2. Select Format Style “Generic ISO11783 – Type 1”.
3. Click “Export to Selected Display”.

Step 4: Skip to Step 5





Chapter 3: Compact Flash Card Preparation

AG Leader:



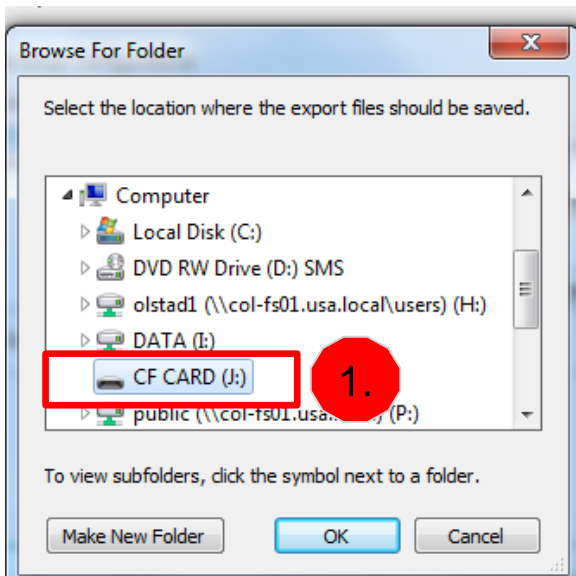
Trimble:



Step 4: Device Setup Export

1. In the Browse For Folder, Select CF Card Drive.

Step 4: Skip to Step 5





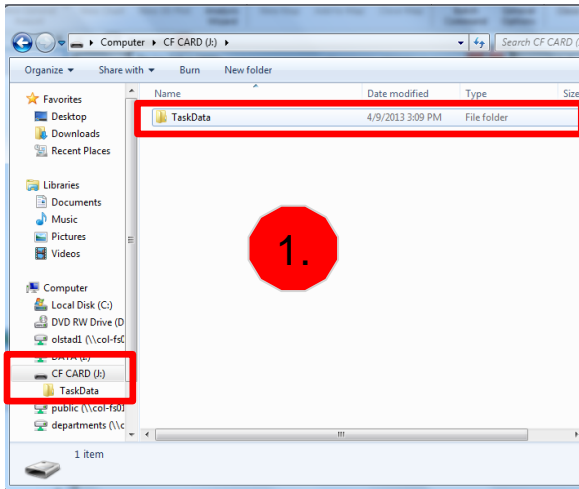
Chapter 3: Compact Flash Card Preparation

AG Leader:



Step 5: Verify

1. Open CF card to verify TaskData folder.
2. Safely eject CF card.

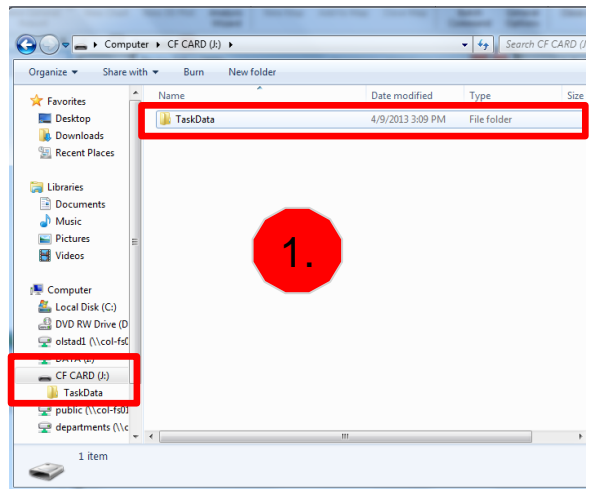


Trimble:



Step 5: Verify

1. Open CF card to verify TaskData folder.
2. Safely eject CF card.

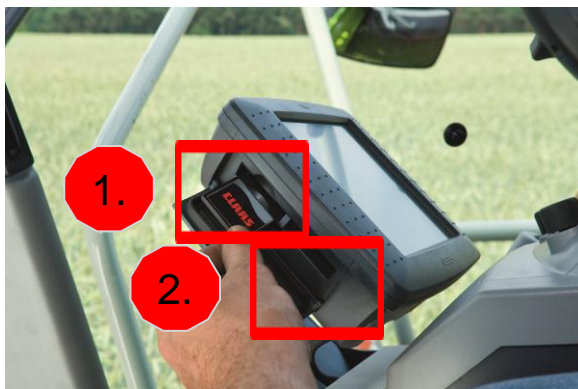




Chapter 4: CEBIS

Step 1: Insert CF card into CEBIS

1. Place card in upper of 2 slots.
2. Slot for Telematics CF (Not required for CEBIS Yield Mapping).



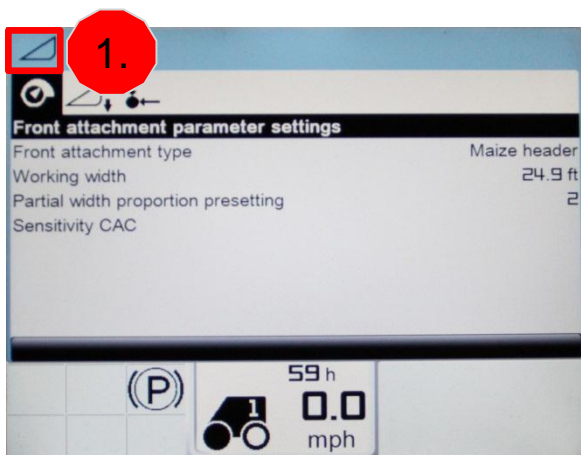
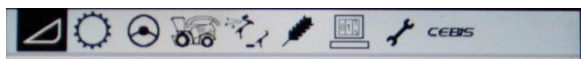
Step 2: Close CEBIS card slot cover

1. Cover must be closed for card to register in CEBIS.



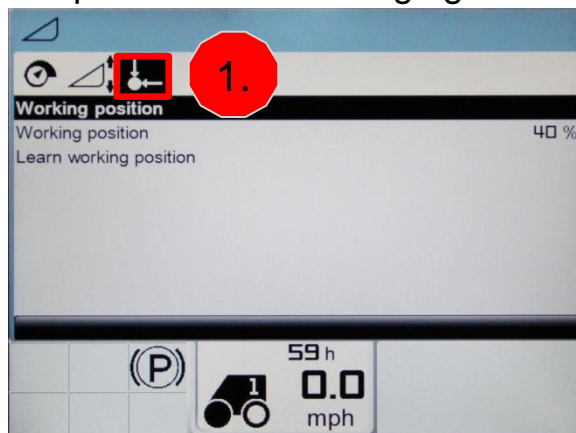
Step 3: Select header

1. Check the front attachment by using the CEBIS rotary dial to scroll through the icons.



Step 4: Select working position parameters

1. Check "Working Position" for headland management. If feeder house is above set position, recording stops. Learn working position when changing heads.

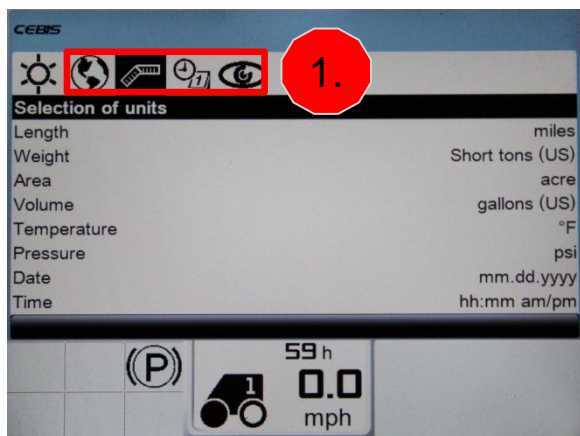




Chapter 4: CEBIS

Step 5: Units

1. Check your language, units, date/time, etc. to ensure you select the proper recording data.



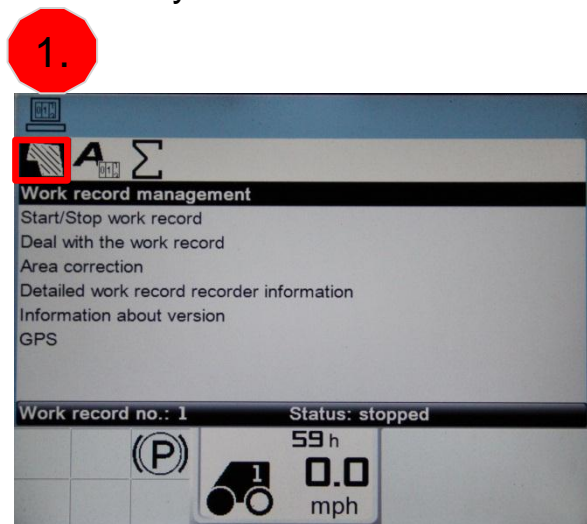
Step 6: Begin CEBIS job setup

1. Using the CEBIS rotary dial, scroll to the Counters icon and depress Rotary Dial.



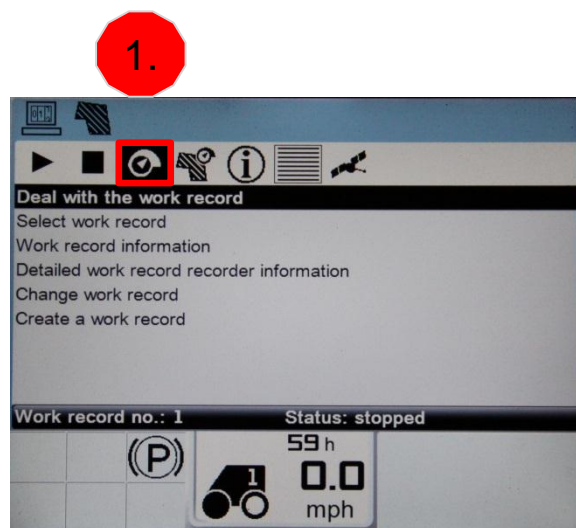
Step 7: Enter Work Data Management

1. Using the CEBIS rotary dial, scroll to the Mapping icon and click Rotary Dial.



Step 8: Begin work record

1. Select "Deal with the work record".





Chapter 4: CEBIS

Step 9: Begin CEBIS job setup

1. Click “Create a work record”.
2. Select the **Farm, Field, Crop, and Operator** specific to the instance (Your options were populated in the software, this cannot be setup in CEBIS).

Don't leave any blank!



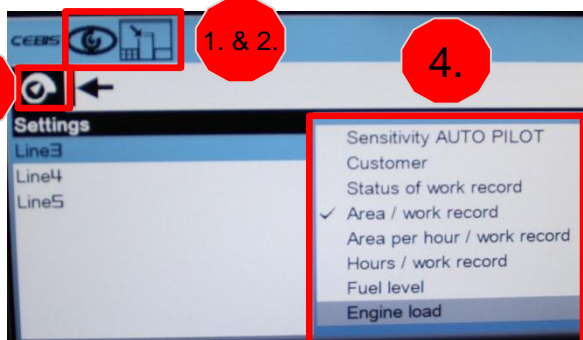
Step 10: Populate line items on CEBIS field screen

1. Select “CEBIS” icon.
2. You can select 3 line items to be displayed on the field screen. (Step by step in Step 11)



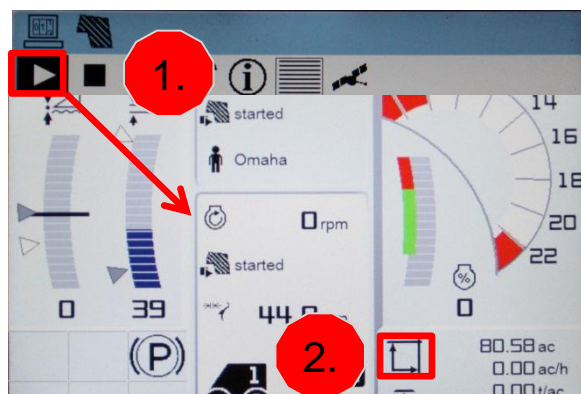
Step 11: Step by step line item selection

1. Scroll to and select “Display Setting”
2. Select “User-defined displays”.
3. Select “Settings”.
4. Scroll through options and pick desired line items.



Step 12: Start recording Data

1. Select “Start the work record” when starting a field.
2. Black background on Measuring icon shows recording in progress.

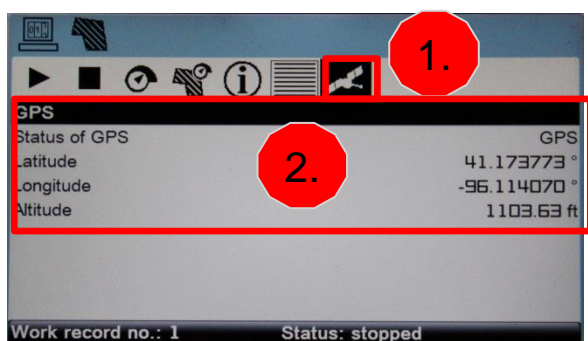




Chapter 4: CEBIS

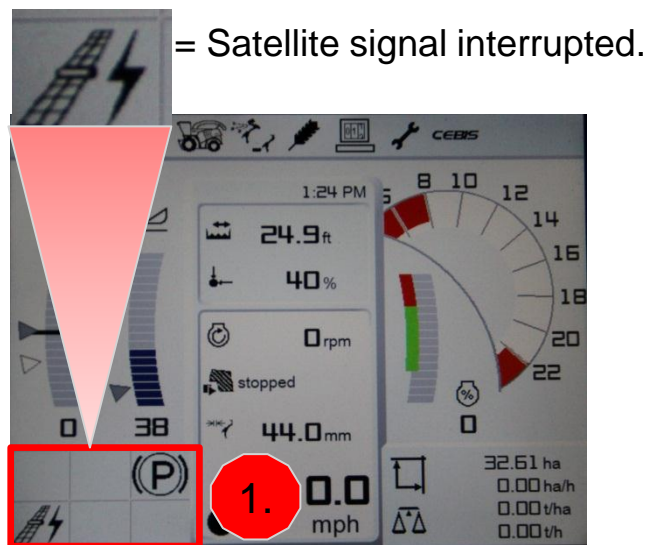
Step 13: Status of GPS

1. After starting the work record, scroll over to the GPS icon.
2. Visually verify that the GPS coordinates are reading.



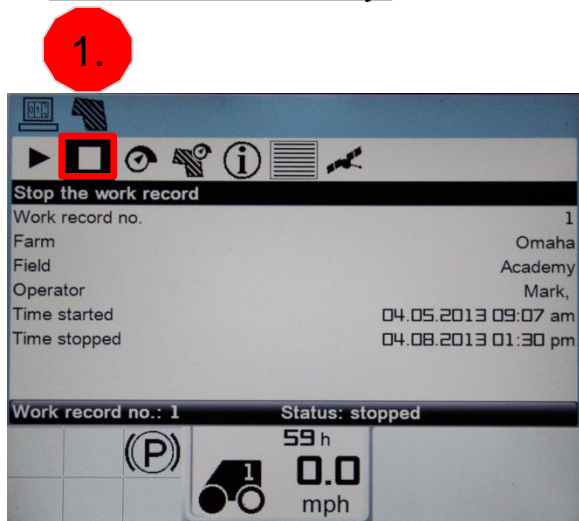
Step 14: Verify GPS signal

1. Visual check warning box.



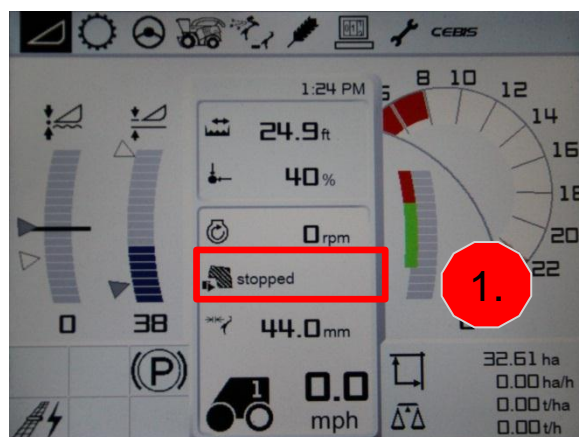
Step 15: Stop recording Data

1. Click "Stop the work record" when field is finished.
Important – Do not forget this step or to save card daily.



Step 16: Verify recording stopped

1. Visually check the field screen line item for a started / stopped work record. Note: this must have been selected in steps 10 & 11.





Chapter 5: Data Transmitting

AG Leader:



Step 1: Connect CF Card

1. Insert CF card into reader.
2. Insert reader USB into computer.



Trimble:

Step 1: Connect CF Card

1. Insert CF card into reader.
2. Insert reader USB into computer.

1.



1.



2.



2.





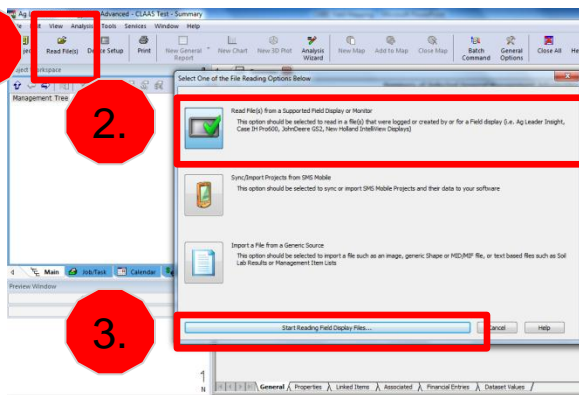
Chapter 5: Data Transmitting

AG Leader:



Step 2: Read Files

1. Click “Read Files”.
2. Select “Read File(s) from a Supported Field Display or Monitor”.
3. Click “Start Reading Field Display Files...”.

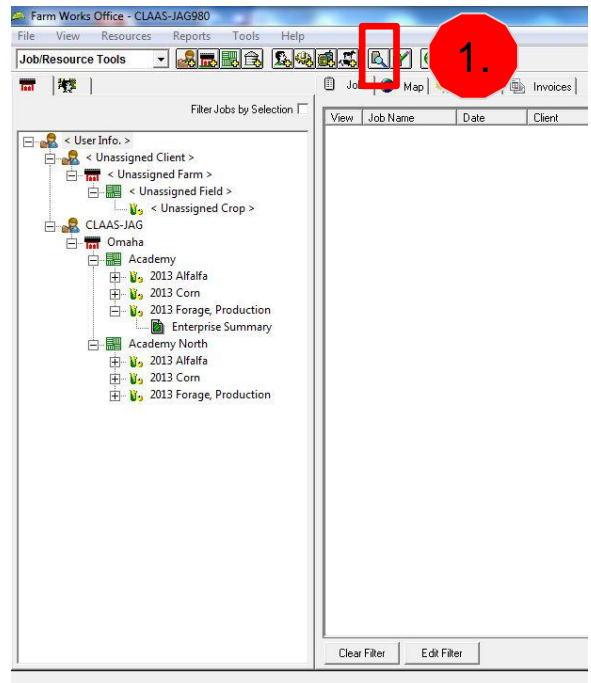


Trimble:



Step 2: Read Files

1. Click “Read Job Data” icon.





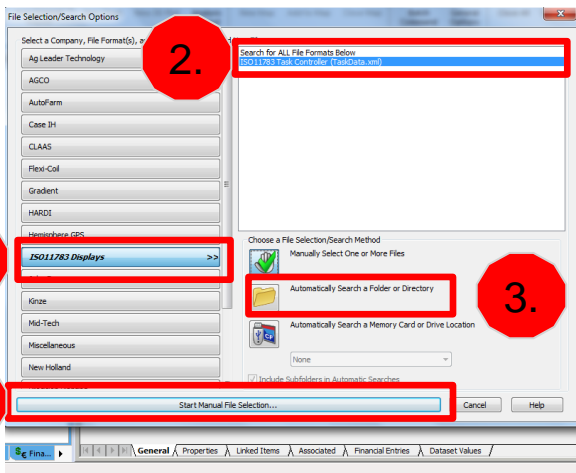
Chapter 5: Data Transmitting

AG Leader:



Step 2: Read Files Continued

1. Select "ISO11783 Displays".
2. Select the file format (.xml).
3. Choose File Selection/Search Method "Manually Select One or More Files" or another method if desired.
4. Click "Start Manual File Selection".

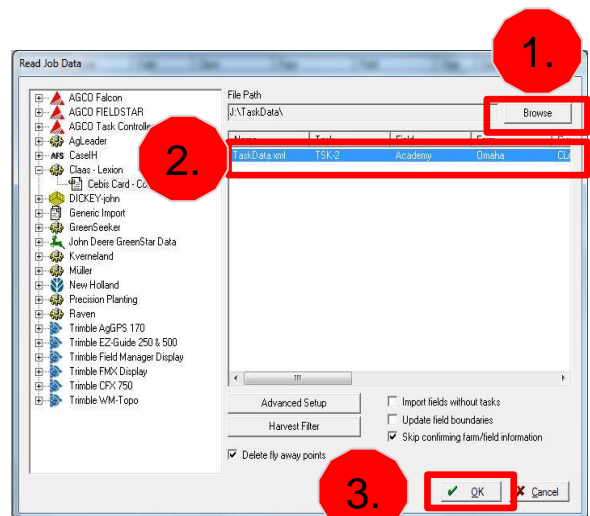


Trimble:



Step 2: Read Files Continued

1. Click "Browse" to navigate to CF card > TaskData Folder > TaskData XML file.
2. Select file(s).
3. Click "OK".





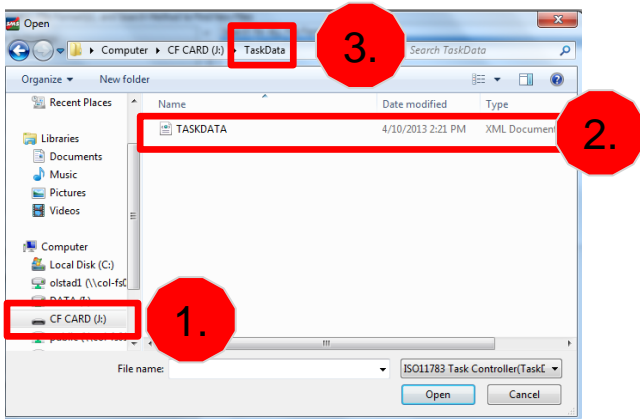
Chapter 5: Data Transmitting

AG Leader:



Step 2: Read Files Continued

1. Locate the CF Card.
2. Open the TaskData folder.
3. Select the TaskData XML Document.

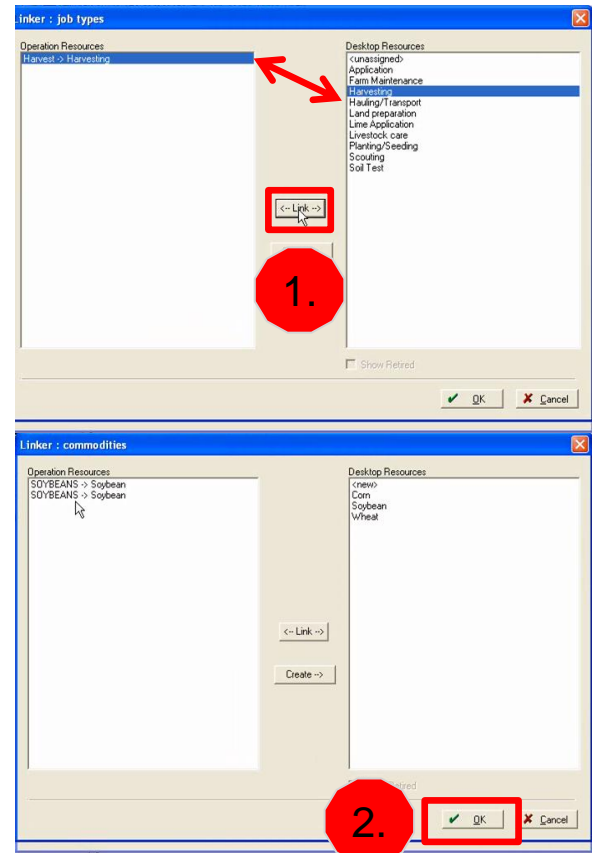


Trimble:



Step 2: Read Files Continued

1. Link if unassigned.
2. Click "OK" if already linked.





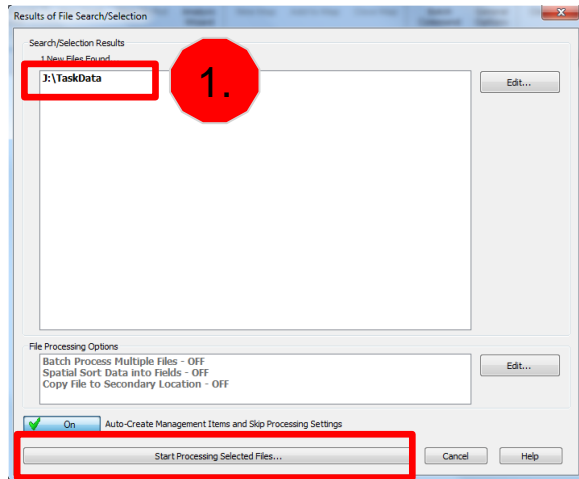
Chapter 5: Data Transmitting

AG Leader:



Step 2: Read Files Continued

1. Verify the TaskData file was found.
2. Click “Start Processing Selected Files”.

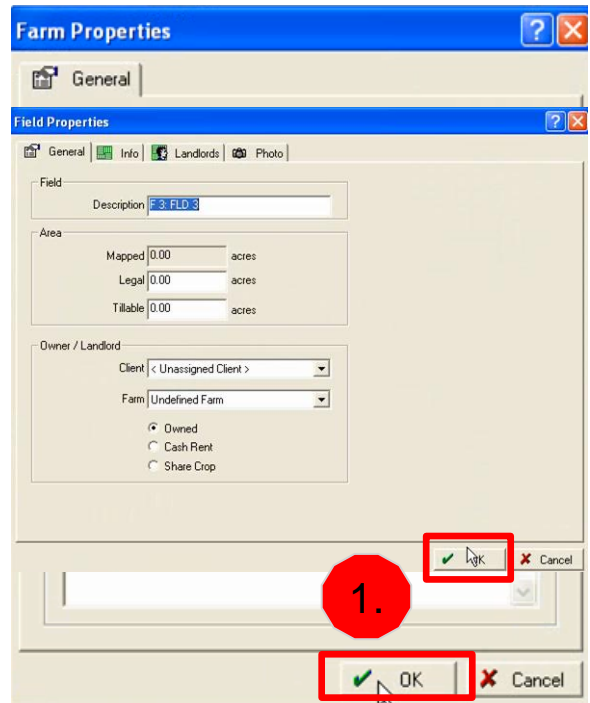


Trimble:



Step 2: Read Files Continued

1. Click “OK” through Farm and Field Properties. Then the import process will start.





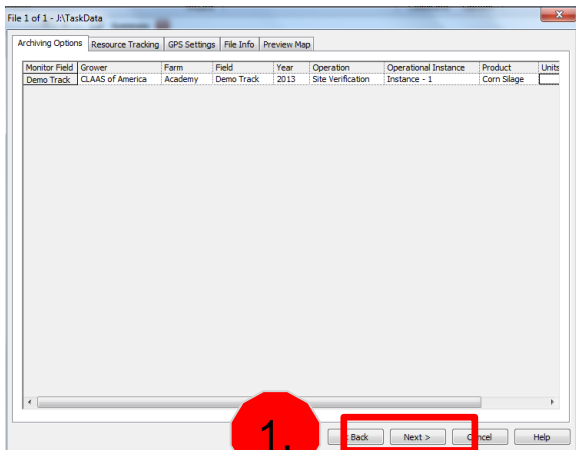
Chapter 5: Data Transmitting

AG Leader:



Step 2: Read Files Continued

1. Click “Next” through the prompt.

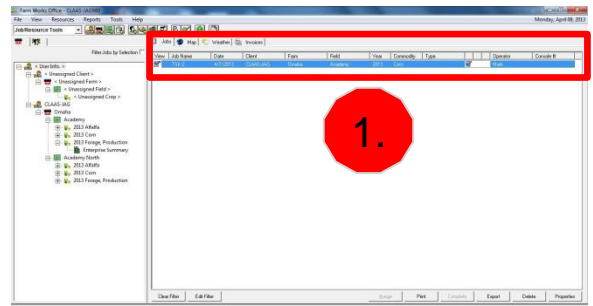


Trimble:



Step 2: Read Files Continued

1. Verify and select the file to work within that job. Then, select the map tab to reveal the map.





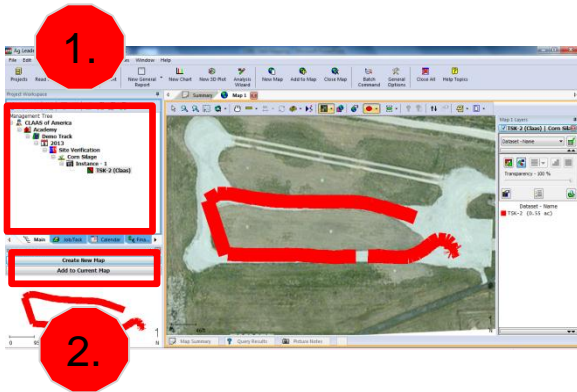
Chapter 5: Data Transmitting

AG Leader:



Step 2: Read Files Continued

1. Locate TaskData in Management tree.
2. Click "Create New Map" to reveal the map.

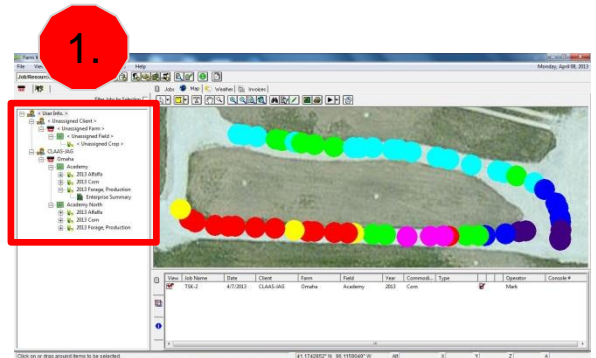


Trimble:



Step 2: Read Files Continued

1. Locate TaskData in Client / Farms / Fields tree.





Chapter 6: FAQs

Q1: Why are numbers relating to yield off on my JAGUAR?

A1: Due to a bug in the programming, CEBIS records yield in KG/AC even when it is set to LBS/AC. Therefore, you must convert KG to LBS within Ag Leader SMS or Trimble Farm Works.

Q2: Why is there data missing in spots of my field?

A2: If the GPS signal is lost, no data will record. The signal is lost every time the machine turns on/off and has a delay of up to 30 minutes.

Q3: Will the work record continue to record data when ignition is turned off?

A3: Yes, you must select stop recording to end task.

Q4: Will it record in road transport?

A4: No, the header drive must be engaged for data to record.

Q5: How should I organize crop with multiple harvests in the same year?

A5: For the commodity (Farm Works) or product (SMS) it is recommended to create one for each instance. For example, Crop A 1st cutting, Crop A 2nd cutting, Crop A 3rd cutting, etc.

*CLAAS of America Inc. is not responsible for improper data preparation, recording, transfer or misuse. The CEBIS Yield Mapping document is simply a guide to give generalized instruction. The process may vary based on the software version and updates. All descriptions and specifications in this guide should be considered as for demonstration purposes. If you are unsure or need assistance with CEBIS Yield Mapping, contact your CLAAS dealer or consult Ag Leader or Trimble for information specific to your operation.